



CONSUMER PRICE INDEX TIMOR-LESTE DECEMBER 2024

CPI SERIES 3 EDITION

Release Date:
January 21st, 2025

Next Release:
February 18st, 2025



INSTITUTO NACIONAL DE ESTATÍSTICA
TIMOR-LESTE, I.P.



Ministerio das Finanças



Title

Consumer Price Index Timor-Leste,
December 2024

Editor

Jemi Natalino Rosario
Rosantina da Costa Cruz Sarmiento
Eduardo M. Ximenes
Silvino Lopes

National Institute of Statistics, I.P.
Rua de Caicoli, PO Box 10
Dili, Timor-Leste

President of National Institute of Statistics, I.P.

[Elias dos Santos Ferreira, L.Ec, MM](#)

Design and Composition
Timor Leste National Institute of Statistics, I.P.



www.inetl-ip.gov.tl

Cristino Gusmão
National Director of Economic Statistics
No. Telp: + 670 77230127
National Institute of Statistics
Rua de Caicoli, Dili, PO Box 10
Telephone: +670 3311348
email: cgusmao@mof.gov.tl



NOTES

CHANGES FROM THE EDITION CPI SERIES 3 None

FORTHCOMING ISSUES	ISSUE	RELEASED DATE
	January 2025	February 18 st , 2025
	February 2025	March 18 st , 2025

QUERIES

For Further information about these and other Related CPI. Contact :

1. Cristino Gusmão, Director da DNEES
Email: cgusmao@mof.gov.tl, No Telp : 77230127
2. Eduardo Martinho Ximenes, Head of Depart. Social and Economic
Email: emximenes@mof.gov.tl, No Telp. 77339216
3. Jemi Natalino Rosario
Email: jnrosario@mof.gov.tl, No Telp. 77543554
4. Rosantina da Costa Cruz Sarmentu
Email: rcsarmento@mof.gov.tl, No Telf. 77085481



Elias dos Santos Ferreira, L.E.C., M.M.
President, Timor-Leste National Institute of Statistics



Contents

1. Contents.....	1
2. December 2024 Monthly Key Figures.....	2
3. December 2024 Key Points.....	3
4. What are the main movements?	5
5. Tradable & Non-Tradable CPI.....	6
6. Table 1 : Timor-Leste Analytical Index December 2024.....	7
7. Table 2 : Dili Analytical Index December 2024.....	8
8. Table 3 : Baucau Analytical Index December 2024.....	9
9. Table 4 : OTHER Analytical Index December 2024.....	10
10. Explanatory Notes.....	11

**CONSUMER PRICE INDEX
TIMOR - LESTE, DECEMBER 2024**


INTRODUCTION TO THE SERIES 3 CPI

All published indexes from September 2018 have been rereferenced to Aug 2018 = 100.0. Time series data, details of new CPI weights, and other information relating to changes to the Timor-Leste CPI are available on the National Institute of Statistics (NIS) website, see www.inetl-ip.gov.tl

December 2024 Key Figures

(a) For March, June, and September 2013, annual percentage changes are calculated on a quarterly basis. For December 2013 onwards annual changes will be calculated on movements between corresponding months of consecutive years.

Timor-Leste Consumer Price Index	Monthly	Annual (a)
	Dec - 2024 to Nov-2024	Dec—2024 to Dec—2023
	% change	% change
All groups CPI	0.2%	-0.4%
Tradeable CPI	0.2%	-0.6%
Non-Tradeable CPI	-0.1%	0.2%
1. Food and non-alcoholic beverages	0.2%	0.1%
2. Alcohol and tobacco	0.0%	-3.2%
3. Clothing and footwear	-0.1%	-0.3%
4. Housing	0.0%	-0.7%
5. Furnishings, household equipment and routine household maintenance	0.0%	-1.2%
6. Health	0.0%	2.3%
7. Transport	-0.3%	-2.4%
8. Communication	0.0%	-0.9%
9. Recreation and culture	0.0%	1.9%
10. Education	0.0%	2.0%



December 2024 Key Points

- The All Groups CPI rose +0.2% in December 2024, compared to a fall -0.2% in November 2024.
- The significant rise of the Food and Non Alcoholic Beverages (+0.2%) group. The Largest offsetting movement came from Transports (-0.3%) and Clothing and Footwear (-0.1%) groups.
- The 12-month Tradeable CPI rate stood at -0.6%, with the Non-Tradeable rate a rise +0.2%

A brief description of Consumer Price Inflation

Consumer price inflation is the rate at which the prices of goods and services bought by households rise or fall. Consumer price inflation is estimated by using price indices. A way to understand a price index is to think of a very large shopping basket containing all the goods and services bought by households. The price index estimates changes to the total cost of this basket.

A price index can be used to measure inflation in a number of ways. The most common is to look at how the index has changed over a year. The change is calculated by comparing the price index for the latest month with the same month a year ago, which is known as the 12-month inflation rate. This bulletin measures inflation to December 2024, so the 12-month rate measures changes in prices between December 2024 and December 2023.

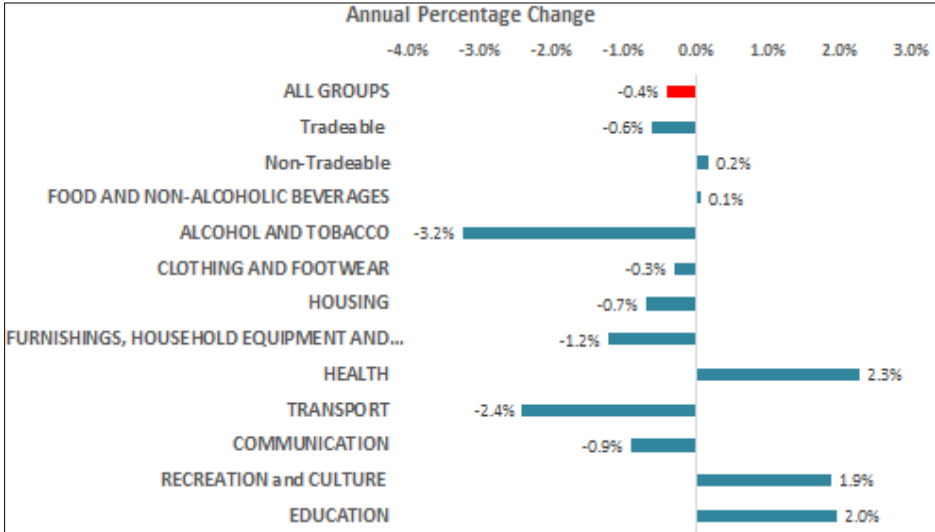
Latest figure and long-term trend

The CPI 12-month rate between December 2024 and December 2023 stood at -0.4%, meaning that a basket of goods and services that cost \$100.00 in December 2023 would have cost \$99.96 in December 2024.

The All Groups CPI (-0.4%) through the year ending December 2024. The largest driver of the fall in the annual came from Transports (-2.4%), Alcohol and Tobacco (-3.2%), Furnishing, Household Equipment and Routine Household Maintenance (-1.2%), Housing (-0.7%), Communication (-0.9%) and Clothing and Footwear (-0.3%) groups. The largest offsetting movement came from Food and Non-Alcoholic Beverages (+0.1%) group, which was driven by Rice (+2.2%), Vegetables (+2.1%), Coffee, Tea and Cocoa (+1.5%), Food Products (+0.5%) and Mineral Waters, Soft Drinks, Fruit and Vegetable Juices (+0.7%) subgroups. The largest offsetting movement came from Oil and Fats (-2.4%), Sugar, Jam, Honey, Chocolate and Confectionery (-5.5%), Milk, Cheese and Eggs (-1.5%), Fish and Seafood (-3.9%), Bread and Cereals (-1.1%), Fruits (-3.1%) and Meat (-0.1%) sub groups. The Education (+2.0%), Recreation and Culture (+1.9%), and Health (+2.3%) groups.



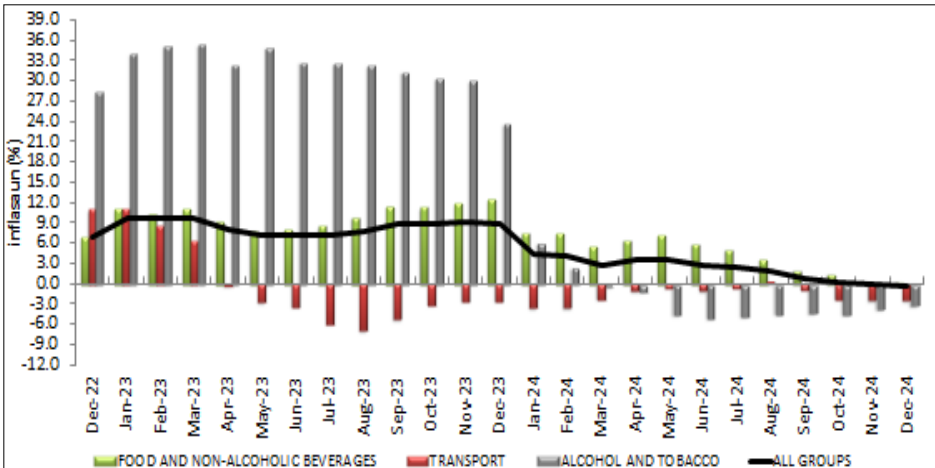
Figure A: Contributions to the CPI 12-month rate, December 2024



Source: National Institute of Statistics, Ministry of Finance

Notes: Individual contributions may not sum to the total due to rounding.

Figure B: CPI 12-month inflation rate with contributions for the period December 2024—December 2022



Source: National Institute of Statistics, Ministry of Finance

The sustained period of deflation as seen during the period December 2024 to December 2022 was largely driven by the Food and non-alcoholic beverage, Transport and Alcohol and Tobacco groups. The rebound in the 12-month CPI rate is driven by a rise in food and non-alcoholic beverage prices.

*Core CPI is equal to All Groups CPI less Food and non-alcoholic beverages and Transport groups

Consumer Price Index (CPI): What are the main movements?

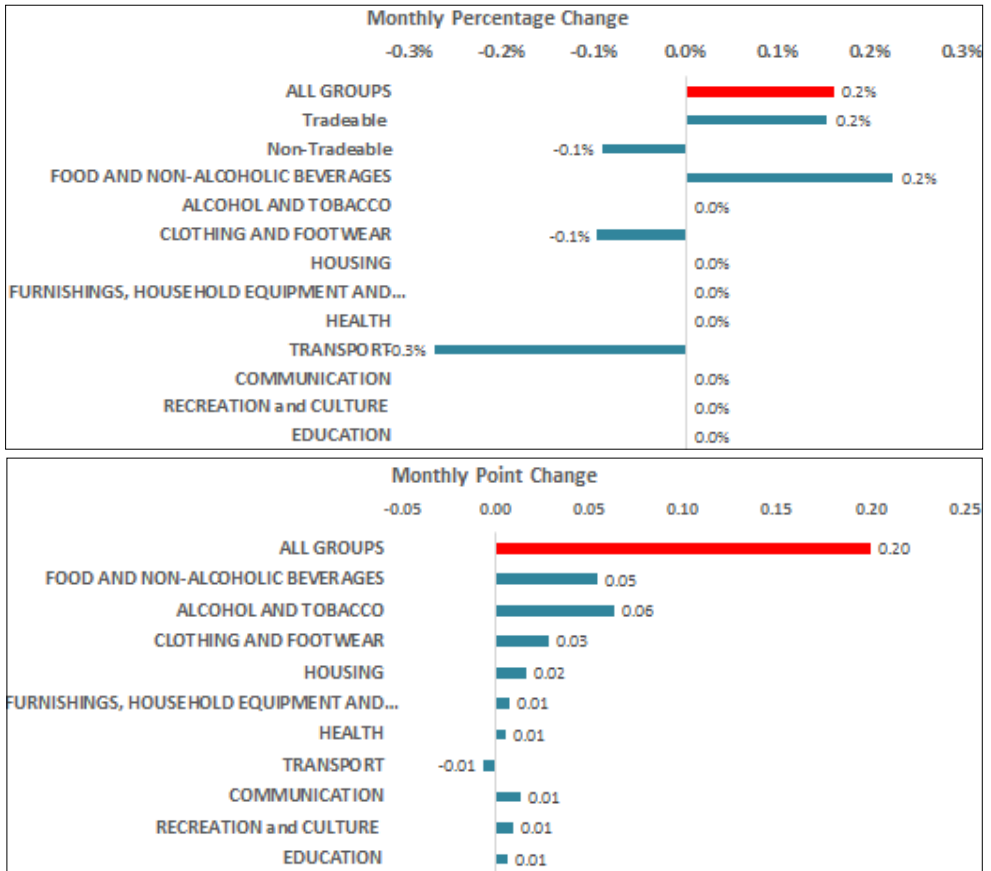
The largest upward contributions to the change in the one month CPI rate (+0.2%) between December 2024 and November 2024, came from:

- **Food and non-alcoholic beverages (+0.2%):** which was significantly driven by Vegetables (+1.3%), Milk, Cheese and Eggs (+1.2%), Fruits (+0.2%) and Sugar, Jam, Honey, Chocolate and Confectionary (+1.3%) sub groups. The largest offsetting movement came from Rice (-0.2%), Fish and Seafood (-0.3%), Meat (-0.2%) and Oil and Fats (-0.3%) sub groups.

In the other part, the largest offsetting movement came from:

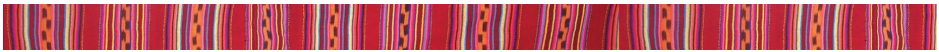
- **Transports (-0.3%):** was driven by Operation of Personal Transports Equipment (-0.7%) sub group.
- **Clothing and Footwear (-0.1):** was driven by Footwear and Clothing Accessories (-0.2%).

Figure C: Contributions to the change in the CPI monthly rate, December 2024 to November 2024



Source: National Institute of Statistics, Ministry of Finance

Notes: Individual contributions may not sum to the total due to rounding.

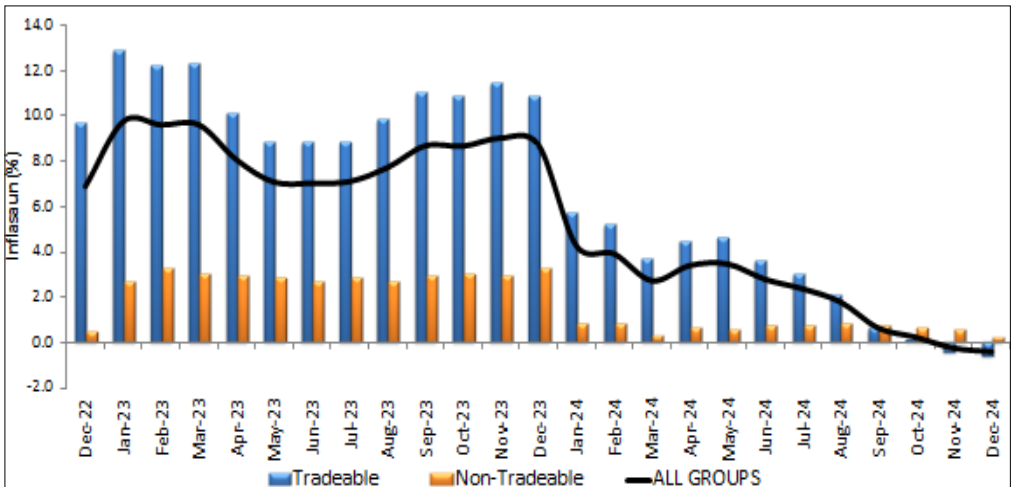


Tradeable & Non-Tradable CPI

The CPI Tradable and Non-tradable series, measure the contribution of domestic (non-tradable) and imported (tradable) inflation to overall household inflation. Identifying the source of household inflation supports the understanding of the different drivers of inflation, as well as informing monetary and fiscal policy decisions .

The definition of a tradable good or service is one that is exposed to a high level of international competition, and its price is influenced by such competition. Similarly, a non-tradable good or service is exposed to low level of international competition, and its price is considered not to be affected by such competition. Inflation for non-tradable items should provide a relatively good sense of the extent to which demand exceeds (or falls short) of supply in the domestic economy. Tradable items are much more exposed to international competition, which includes many imported manufactured goods such as televisions and computers, as well as many food items. The prices of these items should be less influenced by conditions in the Timor-Leste economy, and more affected by prices set on world markets and fluctuations in the exchange rate.

Figure E: Contribution of Tradeable CPI and Non-Tradable CPI to 12-month Inflation rate, Dec-24 to Dec-22



Source: National Institute of Statistics, Ministry of Finance

Notes: Individual contributions may not sum to the total due to rounding.

In reference to Figure E, the positive 12-month inflation as seen over the period December 2022 to December 2024 has been driven by international factors as indicated by the tradeable CPI rate. The 12-month CPI rate is currently at -0.4%, which was driven by the Tradeable (-0.6%) and Non-Tradable (+0.2%) showed increased. The analytical series are indicating that the current inflation rate is being driven by international price pressures and fluctuations in exchange rates.

TABLE 1. TIMOR-LESTE CPI

December 2024		INDEX NUMBERS			PERCENTAGE CHANGE		POINTS CONTRIBUTION		POINTS CHANGE
		Dec 2023	Nov 2024	Dec 2024	Dec-24 to Nov-24	Dec-24 to Dec-23	Nov 2024	Dec 2024	Dec-24 to Nov-24
Groups and Expenditure Class									
a	ALL GROUPS	124.7	124.0	124.2	0.2%	-0.4%	124.0	124.2	0.20
c	TRADEABLE CPI	131.2	130.2	130.4	0.2%	-0.6%			
d	NON-TRADEABLE CPI	109.6	109.9	109.8	-0.1%	0.2%			
1	FOOD AND NON-ALCOHOLIC BEVERAGES	133.0	132.8	133.1	0.2%	0.1%	72.03	72.08	0.05
1.1	Bread and cereals (excluding rice)	111.6	110.4	110.4	0.0%	-1.1%	2.54	2.55	0.01
1.2	Rice	150.9	154.5	154.2	-0.2%	2.2%	19.37	19.34	-0.02
1.3	Meat	109.9	110.0	109.8	-0.2%	-0.1%	8.89	8.89	0.00
1.4	Fish and seafood	107.9	104.0	103.7	-0.3%	-3.9%	3.26	3.25	-0.01
1.5	Milk, cheese and eggs	125.4	122.0	123.5	1.2%	-1.5%	2.63	2.66	0.03
1.6	Oils and fats	152.8	149.6	149.1	-0.3%	-2.4%	5.50	5.50	0.01
1.7	Fruit	106.8	103.3	103.5	0.2%	-3.1%	1.34	1.35	0.01
1.8	Vegetables	162.9	164.3	166.4	1.3%	2.1%	15.42	15.46	0.04
1.9	Sugar, jam, honey, chocolate and confectionery	127.0	118.5	120.0	1.3%	-5.5%	5.42	5.39	-0.03
1.1.0	Food products n.e.c.	107.7	108.2	108.2	0.0%	0.5%	4.19	4.20	0.01
1.1.1	Coffee, tea and cocoa	106.0	107.6	107.6	0.0%	1.5%	1.95	1.95	0.01
1.1.2	Mineral waters, soft drinks, fruit and vegetable juices	112.8	113.6	113.6	0.0%	0.7%	0.89	0.89	0.00
1.1.3	Prepared food/meals	100.0	100.0	100.0	0.0%	0.0%	0.64	0.64	0.00
2	ALCOHOL AND TOBACCO	176.0	170.3	170.3	0.0%	-3.2%	11.86	11.93	0.06
2.1	Alcohol	135.6	131.1	131.1	0.0%	-3.3%	2.16	2.16	0.01
2.2	Tobacco	188.5	182.4	182.4	0.0%	-3.2%	9.71	9.76	0.06
3	CLOTHING AND FOOTWEAR	104.2	104.0	103.9	-0.1%	-0.3%	7.20	7.23	0.03
3.1	Garments for men	102.3	102.6	102.6	0.0%	0.3%	1.26	1.26	0.00
3.2	Garments for women	106.9	105.9	105.9	0.0%	-0.9%	1.23	1.23	0.00
3.3	Garments for infants and children	110.1	110.6	110.6	0.0%	0.5%	2.63	2.65	0.02
3.4	Footwear and clothing accessories	97.3	96.4	96.2	-0.2%	-1.1%	2.09	2.09	0.00
4	HOUSING	101.6	100.9	100.9	0.0%	-0.7%	6.33	6.35	0.02
4.1	Actual rentals paid by tenants	100.0	100.0	100.0	0.0%	0.0%	0.07	0.07	0.00
4.2	Maintenance and repair of the dwelling	106.8	106.1	106.1	0.0%	-0.7%	1.10	1.10	0.00
4.3	Water, electricity, gas and other fuels	100.6	99.9	99.9	0.0%	-0.7%	5.16	5.18	0.01
5	FURNISHINGS, HOUSEHOLD EQUIPMENT AND ROUTINE HOUSEHOLD MAINTENANCE	99.3	98.1	98.1	0.0%	-1.2%	7.70	7.71	0.01
5.1	Household furniture and textiles	100.5	100.1	100.1	0.0%	-0.4%	1.06	1.06	0.00
5.2	Household appliances	95.3	96.1	96.1	0.0%	0.8%	1.01	1.01	0.00
5.3	Goods and services for routine household maintenance	99.8	98.1	98.1	0.0%	-1.7%	5.63	5.63	0.01
6	HEALTH	101.0	103.3	103.3	0.0%	2.3%	1.99	2.00	0.01
6.1	Medical products, appliances and equipment	101.0	103.7	103.7	0.0%	2.7%	1.75	1.75	0.00
6.2	Medical and Hospital services	100.7	100.7	100.7	0.0%	0.0%	0.25	0.25	0.00
7	TRANSPORT	112.2	109.8	109.5	-0.3%	-2.4%	6.38	6.37	-0.01
7.1	Purchase of vehicles	108.2	108.2	108.2	0.0%	0.0%	1.27	1.27	0.00
7.2	Operation of personal transport equipment	117.4	111.8	111.0	-0.7%	-5.5%	2.66	2.64	-0.02
7.3	Transport services	108.8	108.6	108.6	0.0%	-0.2%	2.45	2.45	0.01
8	COMMUNICATION	100.1	99.2	99.2	0.0%	-0.9%	4.71	4.72	0.01
8.1	Telecommunication equipment and services	100.1	99.2	99.2	0.0%	-0.9%	4.71	4.72	0.01
9	RECREATION and CULTURE	100.8	102.7	102.7	0.0%	1.9%	3.56	3.57	0.01
9.1	Audio-visual, photographic and information processing equipment	96.3	101.7	101.7	0.0%	5.6%	0.34	0.34	0.00
9.2	Recreational items and cultural services	100.9	100.8	100.8	0.0%	-0.1%	1.89	1.89	0.01
9.3	Newspapers, books and stationery	102.0	105.8	105.8	0.0%	3.7%	1.33	1.34	0.00
10	EDUCATION	122.5	124.9	124.9	0.0%	2.0%	2.23	2.24	0.01
10	Education	122.5	124.9	124.9	0.0%	2.0%	2.23	2.24	0.01

TABLE 2. DILI - analytical index

December 2024		INDEX NUMBERS			PERCENTAGE CHANGE		POINTS CONTRIBUTION		POINTS CHANGE
		Dec	Nov	Dec	Dec-24	Dec-24	Nov	Dec	Dec-24
		2023	2024	2024	to	to	2024	2024	to
		Groups and Expenditure Class			Nov-24	Dec-23			Nov-24
a	ALL GROUPS	121.1	119.8	120.2	0.3%	-0.7%	119.8	120.2	0.40
1	FOOD AND NON-ALCOHOLIC BEVERAGES	130.3	129.1	130.0	0.7%	-0.2%	66.09	66.39	0.29
1.1	Bread and cereals (excluding rice)	108.8	107.4	107.4	0.0%	-1.3%	2.88	2.88	0.01
1.2	Rice	130.0	129.9	129.6	-0.2%	-0.3%	10.18	10.19	0.02
1.3	Meat	109.9	109.3	109.1	-0.2%	-0.7%	9.51	9.54	0.02
1.4	Fish and seafood	105.2	101.0	100.5	-0.5%	-4.5%	3.92	3.92	-0.01
1.5	Milk, cheese and eggs	127.5	124.1	125.9	1.5%	-1.3%	3.42	3.46	0.04
1.6	Oils and fats	118.5	121.6	119.7	-1.6%	1.0%	3.22	3.18	-0.04
1.7	Fruit	107.4	102.1	102.3	0.2%	-4.7%	2.08	2.10	0.01
1.8	Vegetables	189.4	189.9	193.3	1.8%	2.1%	19.41	19.47	0.06
1.9	Sugar, jam, honey, chocolate and confectionery	126.6	120.3	125.2	4.1%	-1.1%	3.63	3.79	0.16
1.10	Food products n.e.c.	112.4	111.7	111.7	0.0%	-0.6%	4.14	4.15	0.01
1.11	Coffee, tea and cocoa	103.2	103.8	103.8	0.0%	0.6%	1.36	1.37	0.00
1.12	Mineral waters, soft drinks, fruit and vegetable juices	109.6	106.0	106.0	0.0%	-3.3%	1.04	1.04	0.00
1.13	Prepared food/meals	100.0	100.0	100.0	0.0%	0.0%	1.30	1.30	0.00
2	ALCOHOL AND TOBACCO	170.5	162.0	162.0	0.0%	-5.0%	8.59	8.62	0.03
2.1	Alcohol	132.7	127.1	127.1	0.0%	-4.2%	2.09	2.10	0.01
2.2	Tobacco	187.5	177.8	177.8	0.0%	-5.2%	6.50	6.52	0.02
3	CLOTHING AND FOOTWEAR	106.6	106.4	106.3	-0.1%	-0.3%	6.59	6.62	0.02
3.1	Garments for men	99.1	99.5	99.5	0.0%	0.4%	0.90	0.90	0.00
3.2	Garments for women	109.2	107.8	107.8	0.0%	-1.3%	1.02	1.03	0.00
3.3	Garments for infants and children	113.7	114.2	114.2	0.0%	0.4%	2.89	2.91	0.02
3.4	Footwear and clothing accessories	99.1	98.1	97.8	-0.3%	-1.3%	1.78	1.78	0.00
4	HOUSING	100.0	99.2	99.2	0.0%	-0.8%	7.28	7.30	0.02
4.1	Actual rentals paid by tenants	100.0	100.0	100.0	0.0%	0.0%	0.17	0.17	0.00
4.2	Maintenance and repair of the dwelling	109.9	110.2	110.2	0.0%	0.3%	0.25	0.25	0.00
4.3	Water, electricity, gas and other fuels	99.7	98.8	98.8	0.0%	-0.9%	6.85	6.87	0.02
5	FURNISHINGS, HOUSEHOLD EQUIPMENT AND ROUTINE HOUSEHOLD MAINTENANCE	99.9	98.7	98.7	0.0%	-1.2%	7.06	7.07	0.01
5.1	Household furniture and textiles	99.4	99.5	99.5	0.0%	0.1%	1.27	1.28	0.00
5.2	Household appliances	95.1	95.7	95.7	0.0%	0.6%	0.96	0.95	0.00
5.3	Goods and services for routine household maintenance	101.1	99.1	99.1	0.0%	-2.0%	4.83	4.84	0.01
6	HEALTH	100.0	103.2	103.2	0.0%	3.2%	2.28	2.28	0.01
6.1	Medical products, appliances and equipment	100.0	103.7	103.7	0.0%	3.7%	2.00	2.01	0.01
6.2	Medical and Hospital services	100.0	100.0	100.0	0.0%	0.0%	0.28	0.28	0.00
7	TRANSPORT	107.6	104.7	104.3	-0.4%	-3.1%	8.80	8.78	-0.02
7.1	Purchase of vehicles	109.1	109.1	109.1	0.0%	0.0%	1.78	1.78	0.01
7.2	Operation of personal transport equipment	112.7	106.4	105.5	-0.8%	-6.4%	4.10	4.06	-0.04
7.3	Transport services	100.0	100.0	100.0	0.0%	0.0%	2.92	2.93	0.01
8	COMMUNICATION	100.1	98.9	98.9	0.0%	-1.2%	4.81	4.83	0.01
8.1	Telecommunication equipment and services	100.1	98.9	98.9	0.0%	-1.2%	4.81	4.83	0.01
9	RECREATION and CULTURE	100.9	103.0	103.0	0.0%	2.1%	4.33	4.34	0.01
9.1	Audio-visual, photographic and information processing equipment	96.5	101.9	101.9	0.0%	5.6%	0.50	0.50	0.00
9.2	Recreational items and cultural services	101.1	100.9	100.9	0.0%	-0.2%	2.02	2.03	0.01
9.3	Newspapers, books and stationery	102.0	105.7	105.7	0.0%	3.6%	1.80	1.81	0.01
10	EDUCATION	124.1	127.2	127.2	0.0%	2.5%	3.98	3.99	0.01
10	Education	124.1	127.2	127.2	0.0%	2.5%	3.98	3.99	0.01

TABLE 3. BAUCAU - analytical index

December 2024		INDEX NUMBERS			PERCENTAGE CHANGE		POINTS CONTRIBUTION		POINTS CHANGE
		Dec 2023	Nov 2024	Dec 2024	Dec-24 to Nov-24	Dec-24 to Dec-23	Nov 2024	Dec 2024	Dec-24 to Nov-24
Groups and Expenditure Class									
a	ALL GROUPS	112.7	112.3	112.3	0.0%	-0.4%	112.3	112.3	0.00
1	FOOD AND NON-ALCOHOLIC BEVERAGES	118.2	117.5	117.5	0.0%	-0.6%	66.99	66.74	-0.25
1.1	Bread and cereals (excluding rice)	114.8	119.6	119.6	0.0%	4.2%	2.34	2.36	0.02
1.2	Rice	137.8	138.1	138.1	0.0%	0.2%	18.26	18.31	0.04
1.3	Meat	111.7	112.3	112.3	0.0%	0.5%	10.46	10.51	0.04
1.4	Fish and seafood	122.2	121.5	121.8	0.2%	-0.3%	3.91	3.84	-0.07
1.5	Milk, cheese and eggs	105.5	104.0	104.0	0.0%	-1.4%	1.84	1.86	0.01
1.6	Oils and fats	121.1	121.2	121.2	0.0%	0.1%	4.00	4.03	0.03
1.7	Fruit	88.6	87.9	87.9	0.0%	-0.8%	1.10	1.11	0.01
1.8	Vegetables	110.8	110.1	110.1	0.0%	-0.6%	11.67	11.75	0.08
1.9	Sugar, jam, honey, chocolate and confectionery	123.8	109.5	109.5	0.0%	-11.6%	5.55	5.09	-0.46
1.10	Food products n.e.c.	97.2	104.1	104.1	0.0%	7.1%	4.10	4.12	0.03
1.11	Coffee, tea and cocoa	110.0	110.7	110.7	0.0%	0.6%	2.78	2.80	0.02
1.12	Mineral waters, soft drinks, fruit and vegetable juices	118.2	109.5	109.5	0.0%	-7.4%	0.91	0.92	0.01
1.13	Prepared food/meals	100.0	100.0	100.0	0.0%	0.0%	0.05	0.05	0.00
2	ALCOHOL AND TOBACCO	134.1	136.5	136.5	0.0%	1.8%	9.83	9.90	0.07
2.1	Alcohol	121.5	128.1	128.1	0.0%	5.4%	3.36	3.39	0.02
2.2	Tobacco	141.3	141.3	141.3	0.0%	0.0%	6.47	6.51	0.04
3	CLOTHING AND FOOTWEAR	100.6	100.6	100.6	0.0%	0.0%	14.17	14.27	0.10
3.1	Garments for men	110.4	110.4	110.4	0.0%	0.0%	3.20	3.22	0.02
3.2	Garments for women	100.0	100.0	100.0	0.0%	0.0%	2.50	2.52	0.02
3.3	Garments for infants and children	102.5	102.5	102.5	0.0%	0.0%	3.79	3.82	0.03
3.4	Footwear and clothing accessories	93.8	93.8	93.8	0.0%	0.0%	4.68	4.71	0.03
4	HOUSING	107.2	107.2	107.2	0.0%	0.0%	2.77	2.79	0.02
4.2	Maintenance and repair of the dwelling	103.4	103.4	103.4	0.0%	0.0%	0.89	0.90	0.01
4.3	Water, electricity, gas and other fuels	109.2	109.2	109.2	0.0%	0.0%	1.88	1.89	0.01
5	FURNISHINGS, HOUSEHOLD EQUIPMENT AND ROUTINE HOUSEHOLD MAINTENANCE	92.0	91.9	91.9	0.0%	-0.1%	8.09	8.08	-0.01
5.1	Household furniture and textiles	94.2	94.2	94.2	0.0%	0.0%	0.12	0.12	0.00
5.2	Household appliances	101.3	105.9	105.9	0.0%	4.5%	0.30	0.31	0.00
5.3	Goods and services for routine household maintenance	91.7	91.4	91.4	0.0%	-0.3%	7.66	7.65	-0.01
6	HEALTH	113.2	104.6	104.6	0.0%	-7.6%	1.29	1.30	0.01
6.1	Medical products, appliances and equipment	113.9	103.9	103.9	0.0%	-8.8%	1.12	1.13	0.01
6.2	Medical and Hospital services	108.9	108.9	108.9	0.0%	0.0%	0.17	0.17	0.00
7	TRANSPORT	108.3	106.2	106.2	0.0%	-1.9%	1.61	1.62	0.01
7.1	Purchase of vehicles	100.0	100.0	100.0	0.0%	0.0%	0.01	0.01	0.00
7.2	Operation of personal transport equipment	130.0	122.4	122.2	-0.2%	-6.0%	0.52	0.52	0.00
7.3	Transport services	100.0	100.0	100.0	0.0%	0.0%	1.08	1.09	0.01
8	COMMUNICATION	100.0	100.0	100.0	0.0%	0.0%	4.70	4.73	0.03
8.1	Telecommunication equipment and services	100.0	100.0	100.0	0.0%	0.0%	4.70	4.73	0.03
9	RECREATION and CULTURE	101.0	101.0	101.0	0.0%	0.0%	1.77	1.79	0.01
9.1	Audio-visual, photographic and information processing equipment	72.0	72.0	72.0	0.0%	0.0%	0.02	0.02	0.00
9.2	Recreational items and cultural services	102.5	102.6	102.6	0.0%	0.1%	0.99	0.99	0.01
9.3	Newspapers, books and stationery	100.0	100.0	100.0	0.0%	0.0%	0.77	0.78	0.01
10	EDUCATION	100.0	100.0	100.0	0.0%	0.0%	1.07	1.08	0.01
10	Education	100.0	100.0	100.0	0.0%	0.0%	1.07	1.08	0.01

TABLE 2. OTHERS - analytical index

December 2024		INDEX NUMBERS			PERCENTAGE CHANGE		POINTS CONTRIBUTION		POINTS CHANGE
		Dec 2023	Nov 2024	Dec 2024	Dec-24 to Nov-24	Dec-24 to Dec-23	Nov 2024	Dec 2024	Dec-24 to Nov-24
Groups and Expenditure Class									
a	ALL GROUPS	129.6	129.3	129.3	0.0%	-0.2%	129.3	129.3	0.00
1	FOOD AND NON-ALCOHOLIC BEVERAGES	137.6	138.2	138.3	0.1%	0.5%	77.39	77.27	-0.12
1.1	Bread and cereals (excluding rice)	113.6	111.6	111.6	0.0%	-1.8%	2.32	2.33	0.00
1.2	Rice	160.7	166.3	165.9	-0.2%	3.2%	26.47	26.38	-0.09
1.3	Meat	109.4	110.0	109.6	-0.4%	0.2%	8.11	8.07	-0.03
1.4	Fish and seafood	107.5	103.4	103.1	-0.3%	-4.1%	2.64	2.64	0.00
1.5	Milk, cheese and eggs	126.7	123.1	124.4	1.1%	-1.8%	2.19	2.22	0.03
1.6	Oils and fats	172.2	165.9	165.9	0.0%	-3.7%	7.49	7.52	0.03
1.7	Fruit	111.5	110.8	110.9	0.1%	-0.5%	0.83	0.83	0.00
1.8	Vegetables	151.7	154.5	155.9	0.9%	2.8%	13.12	13.14	0.02
1.9	Sugar, jam, honey, chocolate and confectionery	127.5	119.1	119.4	0.3%	-6.4%	6.73	6.64	-0.09
1.10	Food products n.e.c.	106.3	106.6	106.6	0.0%	0.3%	4.23	4.24	0.01
1.11	Coffee, tea and cocoa	106.4	108.8	108.8	0.0%	2.3%	2.23	2.23	0.00
1.12	Mineral waters, soft drinks, fruit and vegetable juices	115.3	123.6	123.6	0.0%	7.2%	0.77	0.77	0.00
1.13	Prepared food/meals	100.0	100.0	100.0	0.0%	0.0%	0.26	0.26	0.00
2	ALCOHOL AND TOBACCO	185.7	179.9	180.0	0.1%	-3.1%	14.70	14.78	0.08
2.1	Alcohol	142.5	135.2	135.2	0.0%	-5.1%	1.97	1.98	0.00
2.2	Tobacco	195.0	189.6	189.7	0.1%	-2.7%	12.73	12.80	0.07
3	CLOTHING AND FOOTWEAR	103.9	103.6	103.6	0.0%	-0.3%	6.32	6.34	0.02
3.1	Garments for men	100.2	100.6	100.6	0.0%	0.4%	1.15	1.15	0.00
3.2	Garments for women	108.4	107.2	107.2	0.0%	-1.1%	1.14	1.14	0.00
3.3	Garments for infants and children	109.3	110.2	110.2	0.0%	0.8%	2.21	2.23	0.02
3.4	Footwear and clothing accessories	97.8	96.5	96.3	-0.2%	-1.5%	1.82	1.82	0.00
4	HOUSING	102.4	101.9	101.9	0.0%	-0.5%	6.30	6.31	0.01
4.1	Actual rentals paid by tenants	100.0	100.0	100.0	0.0%	0.0%	0.00	0.00	0.00
4.2	Maintenance and repair of the dwelling	106.8	105.9	105.9	0.0%	-0.8%	1.78	1.78	0.00
4.3	Water, electricity, gas and other fuels	100.8	100.4	100.4	0.0%	-0.4%	4.52	4.53	0.01
5	FURNISHINGS, HOUSEHOLD EQUIPMENT AND ROUTINE HOUSEHOLD MAINTENANCE	100.4	98.9	98.9	0.0%	-1.5%	8.10	8.10	0.00
5.1	Household furniture and textiles	101.6	100.7	100.7	0.0%	-0.9%	1.08	1.08	0.00
5.2	Household appliances	95.2	95.9	95.9	0.0%	0.7%	1.19	1.18	-0.01
5.3	Goods and services for routine household maintenance	101.2	99.2	99.2	0.0%	-2.0%	5.83	5.84	0.01
6	HEALTH	100.2	103.3	103.3	0.0%	3.1%	1.91	1.92	0.00
6.1	Medical products, appliances and equipment	100.2	103.7	103.7	0.0%	3.5%	1.68	1.68	0.00
6.2	Medical and Hospital services	100.3	100.3	100.3	0.0%	0.0%	0.24	0.24	0.00
7	TRANSPORT	118.6	117.0	116.7	-0.3%	-1.6%	5.47	5.47	0.00
7.1	Purchase of vehicles	107.1	107.1	107.1	0.0%	0.0%	1.13	1.13	0.00
7.2	Operation of personal transport equipment	125.1	120.9	120.2	-0.6%	-3.9%	1.99	1.98	-0.01
7.3	Transport services	119.4	119.0	119.0	0.0%	-0.3%	2.35	2.36	0.00
8	COMMUNICATION	100.1	99.3	99.3	0.0%	-0.8%	4.64	4.64	0.01
8.1	Telecommunication equipment and services	100.1	99.3	99.3	0.0%	-0.8%	4.64	4.64	0.01
9	RECREATION and CULTURE	100.7	102.5	102.5	0.0%	1.8%	3.33	3.33	0.00
9.1	Audio-visual, photographic and information processing equipment	96.4	101.8	101.8	0.0%	5.6%	0.28	0.28	0.00
9.2	Recreational items and cultural services	100.5	100.5	100.5	0.0%	0.0%	1.96	1.96	0.00
9.3	Newspapers, books and stationery	102.2	106.6	106.6	0.0%	4.3%	1.08	1.08	0.00
10	EDUCATION	123.4	124.4	124.4	0.0%	0.8%	1.14	1.14	0.00
10	Education	123.4	124.4	124.4	0.0%	0.8%	1.14	1.14	0.00



EXPLANATORY NOTES

NOTE TO USERS

The Series 3 index incorporate the outcomes of a major review and reweighting of the Timor-Leste CPI. The new weights are based on the results of the 2014-15 Living Standard Survey. Two information papers were published about the review. The first— *‘Timor-Leste Consumer Price Index (CPI), Series 3 2018: Issues for Consideration’* was published in 2017 and sought the views of users on a range of issues under consideration in the review and reweighting exercise. The second *‘Technical Note of Timor-Leste Consumer Price Index Series 3 Reweight’* was published on October 2018 and set out the methodology and result of CPI Series 3. Both information papers can be found on the website of the National Institute of Statistics (NIS) at www.inetl-ip.gov.tl

BRIEF DESCRIPTION OF THE CPI

The Consumer Price Index (CPI) measures changes over time in the price of a ‘basket’ of goods and services which account for a high proportion of expenditure by resident private households. This ‘basket’ covers a wide range of goods and services, arranged in the following ten groups:

1. *Food and non-alcoholic beverages*; 2. *Alcohol and tobacco*; 3. *Clothing and footwear*; 4. *Housing*;
5. *Furnishings, household equipment and routine household maintenance*; 6. *Health*; 7. *Transport*,
8. *Communication*; 9. *Recreation and culture*; 10. *Education*.

Further information about the Timor-Leste CPI is contained in *A Guide to the Timor-Leste CPI* which can be downloaded from the NIS website at www.inetl-ip.gov.tl

INDEXES PUBLISHED

CPI figures are produced by the National Institute of Statistics (NIS) for each month and are released within one month of the end of the reference period.

The primary index published by NIS is the Timor-Leste Consumer Price Index. The data for this national index are presented in Key Figures and Table 1 of the publication.

NIS also publishes three secondary indexes for analytical purposes – the first, representing Dili price movements, the second, representing price movements in Baucau and the third represents price movements for other Timor-Leste municipalities (termed ‘Others’). These analytical series are compiled by taking subsets of the CPI basket, and are presented in Tables 2,3 and 4 in the publication.

COLLECTING PRICES FOR THE CPI

The collection of prices is largely carried out by trained field staff operating from Head office in Dili. The collection of prices in municipalities beyond Dili is carried out by NIS staff operating out of various offices of the NIS, while some prices are collected by special surveys.

WEIGHTING PATTERN

There are 35 expenditure classes (that is, categories of like items) in the Series 3 CPI and each expenditure class has its own weight, or measure of relative importance. In calculating the index, price changes for the various expenditure classes are combined using these weights. The Series 3 CPI weighting pattern is also available on the NIS website at www.inetl-ip.gov.tl



ANALYSIS OF CPI CHANGES

Movements in indexes from one period to another can be expressed either as changes in index points or as percentage changes. Percentage changes are calculated to illustrate two different kinds of movements in index numbers:

- movements between corresponding months of consecutive years
- movements between consecutive months

The following example illustrates the method of calculating changes in index points and percentage changes between any two periods:

All groups CPI: Dili index numbers:

January 2013	101.4
less January 2012	90.7
Change in index points	10.7
Percentage change	$10.7 / 90.7 \times 100 = 11.8\%$

Each table in this publication provides a detailed analysis of movements in the CPI since the previous period, including information on movements for groups and expenditure classes. It also shows the contribution which each makes to the total CPI. For instance, with the Timor-Leste 2013 the Rice expenditure class contributed 17.85 index points to the total all groups index number of 101.3 for January 2013. The final column shows contributions to the change in All Groups index points by each group and expenditure class.

ROUNDING

The published index numbers have been rounded to one decimal place, and the percentage changes (also rounded to one decimal place) are calculated from the rounded index numbers. In some cases, this can result in the percentage change for the total level of a group of indexes being outside the range of the percentage changes for the component level indexes.

REVISIONS

CPI original indexes are revised only in exceptional circumstances, such as to correct a significant error. As is the case with all price indexes, the index reference period (i.e. the period in which the index is set equal to 100.0) will be changed periodically.

DATA AVAILABLE

As well as the statistics included in this publication, there are more detailed data (in time series format) for each index available for downloading from the NIS website.



INSTITUTO NACIONAL DE ESTATÍSTICA
TIMOR-LESTE, I.P.

Instituto Nacional de Estatística, I.P.
Rua de Caicoli, Po Box 10
Dili, Timor-Leste
www.inetl-ip.gov.tl