



INDISE PRESU KONSUMEDOR TIMOR-LESTE OUTUBRO 2024

EDISAUN IPK SERI 3

Data Publikasaun:
19 Novembro 2024

Publikasaun tuir mai:
17 Dezembro 2024



INSTITUTO NACIONAL DE ESTATÍSTICA
TIMOR-LESTE, I.P.



Ministerio das Finanças



Titlu

Indise Presu Konsumedor Timor-Leste,
Outubro 2024

Editor

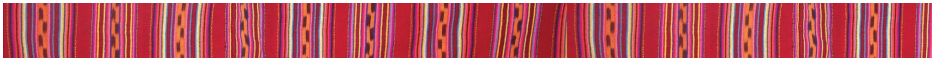
Jemi Natalino Rosario
Rosantina da Costa Cruz Sarmiento
Eduardo M. Ximenes
Silvino Lopes

Instituto Nacional de Estatística, I.P.
Rua de Caicoli, PO Box 10
Dili, Timor-Leste

Prezedente Instituto Nacional de Estatística, I.P.

[Elias dos Santos Ferreira, L.Ec., MM.](#)

Dezeñu no Kompozisaun
Instituto Nacional de Estatística Timor Leste, I.P.



www.inetl-ip.gov.tl

Cristino Gusmão
Director Nacional Economia Estatistica
No. Telf: + 670 77230127
Instituto Nacional de Estatistica Timor Leste, I.P.
Rua de Caicoli, Dili, PO Box 10
Telephone: +670 3311348
email: cguasmao@mof.gov.tl

NOTA

MUDANSA IHA EDISAUN INTRUDUSAUN Laiha
IPK SERI 3

EDISAUN TUIR MAI	PUBLIKASAUN	DATA PUBLIKA
	Novembro 2024	17 Dezembro 2024
	Dezembro 2024	21 Janeiro 2025

INFORMASAUN

**Atu Hatene informasaun kona ba informasaun
ne'ebe iha Relasaun ho IPK, kontaktu:**

1. Cristino Gusmão, Director da DNEES
Email: cgusmao@mof.gov.tl, No Telf: 77230127
2. Eduardo Martinho Ximenes, Head of Depart. Social and Economic
Email: emximenes@mof.gov.tl, No Telf. 77339216
3. Jemi Natalino Rosario
Email: jnrosario@mof.gov.tl, No. Telf. 7754 3554
4. Rosantina da Costa Cruz Sarmentu
Email: rcsarmento@mof.gov.tl, No Telf. 77085481


Elias dos Santos Ferreira, L.Ec., MM.
President, Timor-Leste National Institute of Statistics

Elias dos Santos Ferreira, L.Ec., MM.
Prezidente Instituto Nacional de Estatística



Konteudu

1. Kontiudu.....	1
2. Nemeru Importante Outubro 2024.....	2
3. Pontus Importante Outubro 2024.....	3
4. Saida Maka Mudansa Importante?.....	5
5. Tradable & Non-Tradable CPI.....	6
6. Tabela 1 : Indise Analitiku Timor-Leste Fulan Outubro 2024.....	7
7. Tabela 2 : Indise Analitiku Rejiaun Dili Fulan Outubro 2024.....	8
8. Tabela 3 : Indise Analitiku Rejiaun Baucau Fulan Outubro 2024.....	9
9. Tabela 4 : Indise Analitiku Rejiaun OTHER fulan Outubro 2024.....	10
10. Nota Esplikasaun	11



INDISE PRESU KONSUMEDOR TIMOR LESTE, OUTUBRO 2024

INTRODUSAUN IPK SERI 3

IPK Timor-Leste edisaun seri 3 ne'e sei publika kada fulan hahu husi edisaun fulan Setembro 2018. Sei publika mos analiza mensal husi indise Timor Leste, Dili, Baucau no Other. Publikasaun hotu-hotu husi Indise Setembro 2018 refere fali ba Agosto 2018=100.0 (*hanesan fulan/tinan base ba IPK seri 3*). Tempu seri data nian detailu konaba todan IPK foun, no informasaun seluk relasiona ba movimentu IPK Timor-Leste, bele hare iha INE-TL website www.inetl-ip.gov.tl

Numerus Save Outubro 2024

(a) Ba Marco, Junho, no Setembro 2013, mudansa persentajen anual kalkula baseia ba kada trimestral. Ba Dezembro 2013 ba oin mudansa anual sei kalkula baseia ba fulan ne'ebe hanesan kada tinan.

Indise Presu Konsumedor Timor-Leste	Mensal	Anual (a)
	Out - 2024 to Set - 2024	Out - 2024 to Out - 2023
	Mudansa %	Mudansa %
Grupu hotu IPK	-0.2%	0.2%
Tradable	-0.3%	0.1%
Non-Tradable CPI	0.0%	0.6%
1. Hahan no bebidas la'os Alkoholika	-0.1%	1.4%
2. Alkohol ho tabaku	-0.7%	-4.6%
3. Hatais ho sapatu	0.0%	0.7%
4. Uma	-0.1%	-1.0%
5. Manutensaun rutina ba equipmentu no mobiliariu uma kain	-0.4%	-1.1%
6. Saude	0.0%	2.3%
7. Transportasaun	-0.4%	-2.2%
8. Komunikasaun	0.0%	-0.9%
9. Rekreaun no kultura	0.0%	1.9%
10. Edukasaun	0.0%	2.0%



Save Importante Outubro 2024

- IPK grupu hotu tun (-0.2%) iha Outubro 2024, kompara mos ba tun (-0.2%) iha fulan Setembro 2024.
- Presu tun signifikante iha grupu Hahan no Bebidas La'os Alkoholika (-0.1%), Alkohol no Tabako (-0.7%), Uma (-0.1%), Transporte (-0.4%) no Ekipamentu no Manutensaun Mobilariu Uma Laran (-0.4%).
- IPK Tradeable anual sa'e +0.1%, no IPK Non-Tradable sa'e mos +0.6%.

Deskripsaun Badak ba Inflasaun Presu Konsumedor

Inflasaun Presu Konsumedor hanesan sasukat ida ba nivel presu ba produto no servisu sira nebe kompra no konsume husi uma kain, ne'ebe bele mos sa'e ou tun. inflasaun Presu Konsumedor sukat uza indise presu konsumedor. Komprensaun ba indise presu konsumedor maka presu ba produto no servisu nebe ita determina sai hanesan ita nia raga kompra nebe uma kain konsume maioria, indise presu sukat mudansa kustu ou presu ba raga kompra ida ne'e.

Indise presu bele utiliza ba sukat inflasaun. En-jeral liu maka hare ba mudansa indise presu kada tinan nebe halo komparaun entre fulan ida agora (fulan A tinan agora) ba fulan nebe hanesan iha tinan kotuk (fulan A tinan kotuk). Ida ne'e bolu hanesan nivel inflasaun 12-fulan (tinan). Buletin ida ne'e sukat inflasaun ba fulan Outubro 2024, ho ida ne'e nivel inflasaun 12-fulan nia maka kompara indise presu fulan Outubro 2024 ba Outubro 2023.

Numeru Ikus no Tendesia Longu-Prazu

Nivel IPK anual entre Outubro 2024 ba Outubro 2023 sa'e +0.2%. Signifika katak kustu ba raga produto no servisu sira ne'ebe ho \$100.00 iha Outubro 2023 sa'e ba \$100.02 iha Outubro 2024.

IPK anual sa'e (+0.2%) iha tinan ida ne'e ho kalendariu fulan Outubro 2024. Kontributor bo'ot liu presu sa'e ida ne'e hetan kontribuisaun husi grupu Hahan no Bebidas laos Alkoholika (+1.4%), ne'ebe afeta husi subgrupu Foes (+3.6%), Modo Tahan (+7.8%), Kafe, Xa, no Kokoa (+2.3%), no Be, Bebidas, Jus no Jus vejetais (+0.5%). Sub Grupu Mina no Bokur (-4.9%), Masin Midar, Marmelada, Banibeen, Cokolate no Hahan Midar (-5.8%), Susubeen, Keiju no Manutolon (-1.4%), Ikan no Hahan Tasi (-2.9%), Naan (-0.1%), Paun no Sereal (-1.1%) no Ai-fuan (-3.6%) sai hanesan mudansa kontrariu ba inflasaun hahan no bebidas la'os alkoholika. Grupu Edukasaun (+2.0%), Rekreaun no Kultura (+1.9%), Saude (+2.3%), no Hatais no Sapatu (+0.7%). Grupu Transporte (-2.2%), Alkohol no Tabako (-4.6%), Ekipamentu no Manutensaun Mobilariu Uma Laran (-1.1%), Uma (-1.0%) no Komunikaun (-0.9%) sai hanesan mudansa kontrariu ba inflasaun grupu hotu.

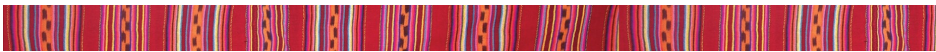
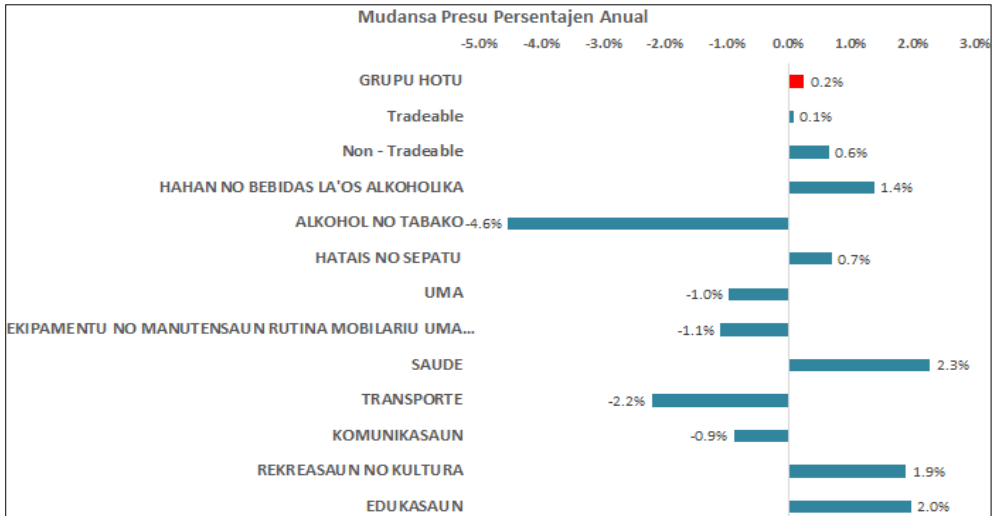


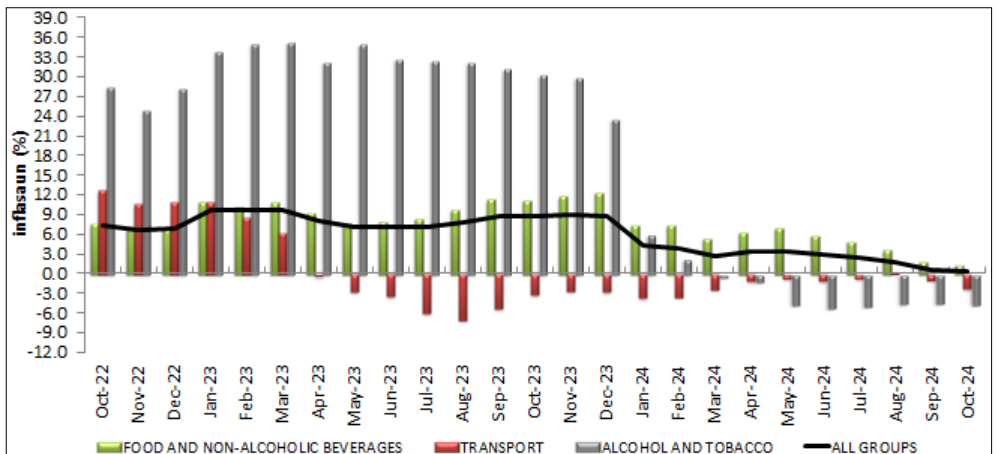
Figura A: Kontribusi saun ba nivel IPK anual, Outubro 2024



Fontes: Instituto Nacional de Estadística, I.P., Ministerio das Finanzas

Notas: Kontribusi saun individu (kada item) lahatudu ba iha total tanba arredondar (rounding).

Figura B: Tendensia inflasaun anual ba periode Outubro 2022 to'o Outubro 2024



Període inflasaun ne'ebe hatudu iha període Outubro 2022 to'o Outubro 2024 hetan impaktu husi presu grupu Hahan no Bebidas Laos Alkoholika, grupu Transporte no grupu Alkohol no Tabako. Depois akontese fali inflasaun anual iha període tuir mai tanba afeta husi presu grupu Hahan no Bebidas Laos Alkoholika ne'ebe sa'e fali.

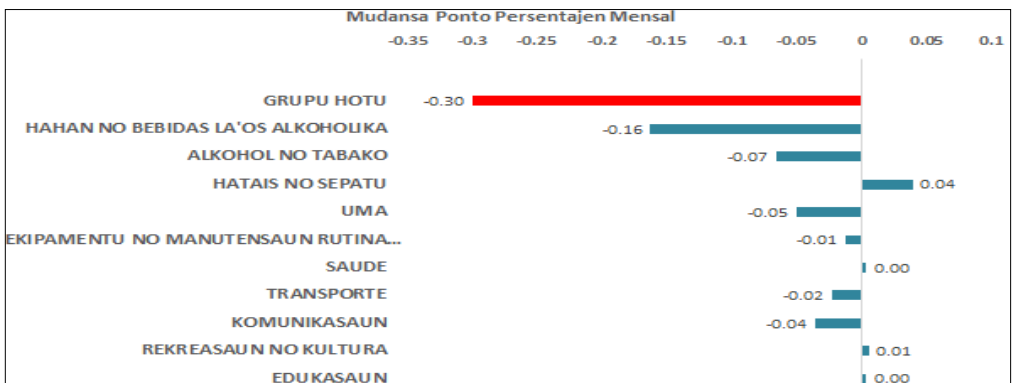
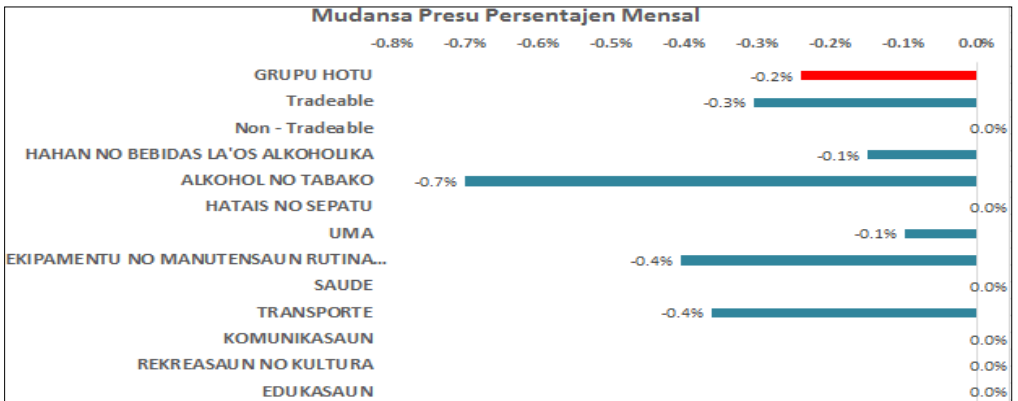
*Core CPI hetan husi IPK grupu hotu menus IPK grupu Hahan no Bebidas laos Alkoholika no Transportasaun

Indise Presu Konsumedor (IPK): saida maka mudansa importante?

Kontribuisaun importante ba nivel IPK mensal tun (-0.2%) entre Outubro 2024 no Setembro 2024, mai husi:

- **Hahan no Bebidas laos Alkoholika (-0.1%):** afeita husi sub grupu Modo Tahan (-0.5%), Susubeen, Keiju no Manutolun (-1.3%), Paun no Sereal (-0.5%), no Foos (-0.1%). Sub grupu Kafe, Xa no Kokoa (+0.8%), Mina no Bokur (+0.2%) no Ai-fuan (+1.1%) sai hanesan mudansa kontrariu ba inflasaun grupu hahan no bebidas la'os alkoholika.
- **Alkohol no Tabako (-0.7%):** Afeita husi sub grupo Alkohol (-3.9%).
- **Uma (-0.1%):** Afeita husi sub grupo Manutensaun no Hadia hela fatin (-0.2%).
- **Transporte (-0.4%):** Afeita husi sub grupo Operasaun ba Ekipamentu Transporte Personal (-1.0%).
- **Ekipamentu no Manutensaun Mobiliariu Uma Laran (-0.4%):** afeta husi sub grupu Produktu no Servisus ba Rutina Hadia Uma Laran (-0.6%).

Figura C: Kontribuisaun ba mudansa nivel IPK mensal, Setembro 2024 – Outubro 2024



fontes: Instituto Nacional de Estatística, Ministerio das Finansas

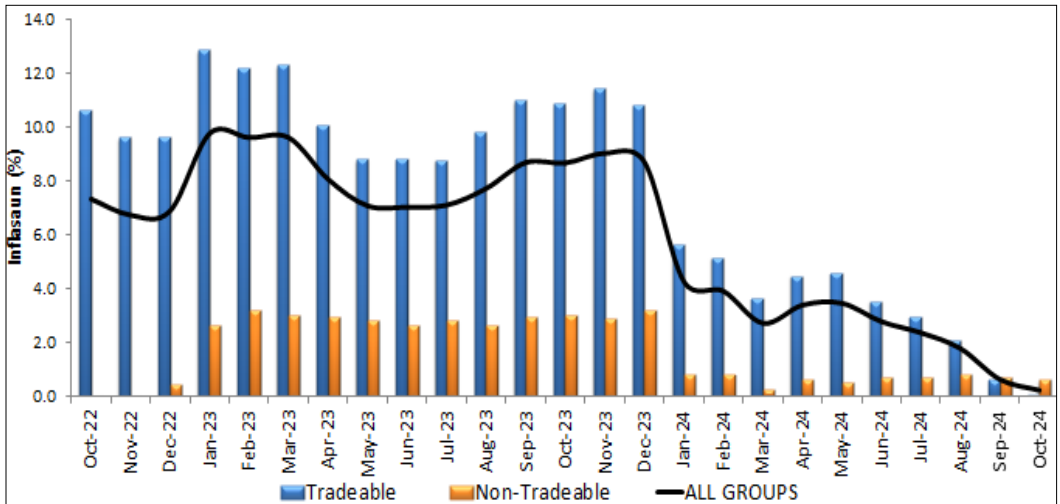
Notas: Kontribuisaun individu (kada item) lahatudu ba iha total tanba arredondar (rounding).

IPK Tradeable no Non-Tradeable

IPK Tradeable no Non-Tradeable, sukat kontribuisaun husi inflasaun domestika (non-tradeable) no importa (tradeable) ba inflasaun en-jeral. Identifikasaun fonte fator inflasaun umakain (konsumedor) ida ne'e suporta atu komprende fator diferente ne'ebe fo impaktu ba inflasaun, nune'e mos ajuda desizaun politika moneter no fiskal.

Definisaun produto no servisu tradeable maka hanesan ida ne'ebe dependensia ba nivel kompetisuaun merkadu internasional, no presu produto no servisu sira ne'e hetan influencia husi kompetisaun refere. Hanesan mos, produto no servisu non-tradeable ne'ebe iha depedensia ki'ik liu ba kompetisaun merkadu internasional, no presu produto no servisu sira ne'e konsidera la hetan impaktu direta husi kompetisaun refere. Inflasaun ba produto no servisu non-tradeable reprezenta nivel situasaun ne'ebe nesidade barak liu (ou ki'ik liu) duke forneseimentu iha ekonomia domestiku. Produto no servisu tradeable sai hanesan depedensia maka'as liu ba kompetisaun internaional, ne'ebe inklui hanesan produto importa televisaun no komputador nomos produto hahan sira seluk. Presu produto sira ne'e hetan influencia presu bot liu husi presu internasional iha merkadu mundial no fluktuasaun valor osan, duke husi fator ekonomia domestiku.

Figura E: Kontribuisaun IPK Tradeable no Non-Tradeable ba Inflasaun Anual, Kompára Out 24 - Out 22



Fontes: Instituto Nacional de Estatística, Ministerio das Finanças

Notas: Kontribuisaun individu (kada item) lahatudu ba iha total tanba *arredondar* (rounding).

Iha referensia grafiku E, inflasaun anual positivu hanesan hatudu iha periode 2022 to'o 2024, hetan impaktu husi fator internasional sira hanesan hatudu iha nivel IPK tradeable. Nivel inflasaun anual agora dadaun +0.2%, ne'ebe afeta husi kontribuisaun Tradeable (+0.1%) no Non-Tradeable sa'e mos (+0.6%). Series analitiku indika katak nivel inflasaun agora dadaun hetan presau husi presu merkadoria internasional no valor osan ne'ebe fluktuativu.

TABELA 1. TIMOR-LESTE IPK

Outubro 2024	Grupo Gastu	Numeru Indise			Mudansa Persentajen		Pontu Kontribuisaun		Mudansa Pontu
		Out 2023	Set 2024	Out 2024	Out-24 to Set-24	Out-24 to Out-23	Set 2024	Out 2024	Out-24 to Set-24
a	GRUPU HOTU	124.0	124.6	124.3	-0.2%	0.2%	124.6	124.3	-0.30
c	IPK Tradable	130.5	131.0	130.6	-0.3%	0.1%			
d	IPK Non-Tradable	109.2	109.9	109.9	0.0%	0.6%			
1	HAHAN NO BEBIDAS	131.6	133.6	133.4	-0.1%	1.4%	72.36	72.20	-0.16
1.1	Pao ho hahan husi Fós	111.5	110.8	110.3	-0.5%	-1.1%	2.56	2.55	-0.02
1.2	Fós	149.4	154.9	154.8	-0.1%	3.6%	19.40	19.41	0.01
1.3	Na'an	110.2	110.0	110.1	0.1%	-0.1%	8.91	8.91	0.00
1.4	Ikan ho hahan tasi	107.5	104.4	104.4	0.0%	-2.9%	3.28	3.27	-0.01
1.5	Susu ben, keju ho manu tolu	124.2	124.0	122.4	-1.3%	-1.4%	2.66	2.64	-0.03
1.6	Bokurho mina	157.0	149.0	149.3	0.2%	-4.9%	5.49	5.51	0.02
1.7	Frutas	107.0	102.1	103.2	1.1%	-3.6%	1.34	1.34	0.00
1.8	Vejetais	154.4	167.3	166.4	-0.5%	7.8%	15.57	15.46	-0.12
1.9	Masin midar, marmelada, bani ben, chocolate	128.5	121.0	121.0	0.0%	-5.8%	5.49	5.44	-0.05
1.10	Produutu Aihan	108.2	108.2	108.2	0.0%	0.0%	4.19	4.20	0.01
1.11	Café, xá, no cacao	105.2	106.7	107.6	0.8%	2.3%	1.93	1.95	0.02
1.12	Be, Bebidas, jus ai fuan no modo tahan	113.0	113.6	113.6	0.0%	0.5%	0.89	0.89	0.00
1.13	Hahan preparadu	100.0	100.0	100.0	0.0%	0.0%	0.64	0.64	0.00
2	ALKOHOL HO TABAKU	178.0	171.1	169.9	-0.7%	-4.6%	11.96	11.89	-0.07
2.1	Alkohol	134.5	136.3	131.0	-3.9%	-2.6%	2.24	2.16	-0.08
2.2	Tabaku	191.5	181.9	181.9	0.0%	-5.0%	9.72	9.73	0.02
3	HATAIS HO SAPATU	103.1	103.8	103.8	0.0%	0.7%	7.18	7.22	0.04
3.1	Roupa ba mane	101.8	102.6	102.6	0.0%	0.8%	1.26	1.26	0.00
3.2	Roupa ba feto	101.2	105.9	105.9	0.0%	4.6%	1.20	1.23	0.03
3.3	Roupa ba labarik ho bebe	110.1	110.1	110.2	0.1%	0.1%	2.63	2.64	0.01
3.4	Sapatu ho asesories ropa	97.3	96.4	96.4	0.0%	-0.9%	2.09	2.09	0.00
4	UMA	101.9	101.0	100.9	-0.1%	-1.0%	6.40	6.35	-0.05
4.1	Aluga uma	100.0	100.0	100.0	0.0%	0.0%	0.07	0.07	0.00
4.2	Manutensaun no hadiak hela fatin	106.4	106.4	106.2	-0.2%	-0.2%	1.10	1.10	0.00
4.3	Be, eletrisidade, gas no sira seluk	101.0	99.9	99.9	0.0%	-1.1%	5.23	5.18	-0.05
5	MANUTENSAUN RUTINA BA EQUIPAMENTO NO MOBILIARIO UMA LARAN	99.4	98.7	98.3	-0.4%	-1.1%	7.73	7.72	-0.01
5.1	Mobiliario no tekstil uma laran	98.2	100.1	100.1	0.0%	1.9%	1.06	1.06	0.00
5.2	Manutensaun uma laran	98.6	96.4	96.9	0.5%	-1.7%	1.01	1.02	0.01
5.3	Sasan no kolen ba equipamento uma laran	99.8	98.8	98.2	-0.6%	-1.6%	5.66	5.64	-0.02
6	SAUDE	101.0	103.3	103.3	0.0%	2.3%	1.99	2.00	0.00
6.1	Produutu medicamentos no material equipamentos	101.0	103.7	103.7	0.0%	2.7%	1.75	1.75	0.00
6.2	Doutor no atendimento husi hospital	100.7	100.7	100.7	0.0%	0.0%	0.25	0.25	0.00
7	TRANSPORTASAUN	112.4	110.3	109.9	-0.4%	-2.2%	6.42	6.40	-0.02
7.1	Sosa kareta	108.7	108.2	108.2	0.0%	-0.5%	1.27	1.27	0.00
7.2	Utiliza equipamento transportasaun pessoal	117.6	113.1	112.0	-1.0%	-4.8%	2.70	2.67	-0.03
7.3	Hadia transportasaun	108.8	108.6	108.6	0.0%	-0.2%	2.45	2.45	0.00
8	KOMUNIKASAUN	100.1	99.2	99.2	0.0%	-0.9%	4.76	4.72	-0.04
8.1	Hadia equipamento telekomunikasaun	100.1	99.2	99.2	0.0%	-0.9%	4.76	4.72	-0.04
9	REKREASAUN NO KULTURA	100.8	102.7	102.7	0.0%	1.9%	3.56	3.57	0.01
9.1	Equipamentos audio visual, fotografian no produs informasaun	96.3	101.7	101.7	0.0%	5.6%	0.34	0.34	0.00
9.2	Sasan rekreasaun no kultura	100.9	100.8	100.8	0.0%	-0.1%	1.89	1.89	0.00
9.3	Jornal, livru no equipamento hakerek	102.0	105.8	105.8	0.0%	3.7%	1.33	1.34	0.00
10	EDUKASAUN	122.5	124.9	124.9	0.0%	2.0%	2.23	2.24	0.00
10.1	Edukasaun	122.5	124.9	124.9	0.0%	2.0%	2.23	2.24	0.00



TABELA 2. DILI - analytical index

Outubro 2024		Numeru Indise			Mudansa Persentajen		Pontu Kontribuisaun		Mudansa Pontu	
		Out 2023	Set 2024	Out 2024	Out-24 to Set-24	Out-24 to Out-23	Set 2024	Out 2024	Out-24 to Set-24	
Grupú Gastu										
a	GRUPU HOTU	120.1	120.4	120.2	-0.2%	0.1%	120.4	120.2	-0.20	
1	HAHAN NO BEBIDAS	128.4	130.1	129.8	-0.2%	1.1%	66.47	66.31	-0.16	
1.1	Pao ho hahan husi Fós	108.9	107.8	107.3	-0.5%	-1.5%	2.91	2.89	-0.02	
1.2	Fós	130.4	129.4	129.7	0.2%	-0.5%	10.10	10.21	0.11	
1.3	Na'an	110.7	109.1	109.2	0.1%	-1.4%	9.53	9.54	0.01	
1.4	Ikan ho hahan tasi	105.3	101.0	100.9	-0.1%	-4.2%	3.94	3.94	0.00	
1.5	Susu ben, keju ho manu tolu	126.0	126.2	124.8	-1.1%	-1.0%	3.44	3.43	-0.01	
1.6	Bokurho mina	130.3	121.3	121.6	0.2%	-6.7%	3.21	3.23	0.02	
1.7	Frutas	107.7	100.6	101.9	1.3%	-5.4%	2.08	2.09	0.01	
1.8	Vejetais Masin midar, marmelada, bani ben, chocolate	175.7	194.7	193.3	-0.7%	10.0%	19.73	19.48	-0.25	
1.9	Produu Aihan	126.6	120.3	120.3	0.0%	-5.0%	3.69	3.65	-0.05	
1.10	Produu Aihan	112.4	111.7	111.7	0.0%	-0.6%	4.14	4.15	0.01	
1.11	Café, xá, no cacao	103.2	103.8	103.8	0.0%	0.6%	1.36	1.37	0.00	
1.12	Be, Bebidas, jus ai fuan no modo tahan	109.7	106.0	106.0	0.0%	-3.4%	1.04	1.04	0.00	
1.13	Hahan preparadu	100.0	100.0	100.0	0.0%	0.0%	1.30	1.30	0.00	
2	ALKOHOL HO TABAKU	171.6	163.3	162.0	-0.8%	-5.6%	8.65	8.62	-0.03	
2.1	Alkohol	132.4	131.0	126.9	-3.1%	-4.2%	2.15	2.09	-0.06	
2.2	Tabaku	189.3	177.8	177.8	0.0%	-6.1%	6.50	6.53	0.02	
3	HATAIS HO SAPATU	105.3	106.2	106.2	0.0%	0.9%	6.56	6.62	0.05	
3.1	Roupa ba mane	98.5	99.5	99.5	0.0%	1.0%	0.90	0.90	0.00	
3.2	Roupa ba fetu	101.5	107.8	107.8	0.0%	6.2%	1.00	1.03	0.03	
3.3	Roupa ba labarik ho bebe	113.7	113.7	113.7	0.0%	0.0%	2.89	2.90	0.01	
3.4	Sapatu ho asesories ropa	99.1	98.1	98.1	0.0%	-1.0%	1.78	1.79	0.01	
4	UMA	100.7	99.2	99.2	0.0%	-1.5%	7.34	7.30	-0.04	
4.1	Aluga uma	100.0	100.0	100.0	0.0%	0.0%	0.17	0.17	0.00	
4.2	Manutensaun no hadiak hela fatin	109.6	110.3	110.7	0.4%	1.0%	0.25	0.26	0.00	
4.3	Be, eletrisidade, gas no sira seluk	100.5	98.8	98.8	0.0%	-1.7%	6.91	6.87	-0.04	
5	MANUTENSAUN RUTINA BA EQUIPAMENTO NO MOBILARIO UMA LARAN	99.8	99.2	98.8	-0.4%	-1.0%	7.08	7.08	0.00	
5.1	Mobiliario no tekstil uma laran	97.5	99.5	99.5	0.0%	2.1%	1.27	1.28	0.00	
5.2	Manutensaun uma laran	98.4	96.0	96.5	0.5%	-1.9%	0.95	0.96	0.01	
5.3	Sasan no kolen ba equipamento uma laran	100.7	99.8	99.1	-0.7%	-1.6%	4.85	4.85	-0.01	
6	SAUDE	100.0	103.2	103.2	0.0%	3.2%	2.28	2.28	0.01	
6.1	Produu medicamentos no material equipamentos	100.0	103.7	103.7	0.0%	3.7%	2.00	2.01	0.01	
6.2	Doutor no atendimento husi hospital	100.0	100.0	100.0	0.0%	0.0%	0.28	0.28	0.00	
7	TRANSPORTASAUN	108.0	105.4	104.8	-0.6%	-3.0%	8.85	8.83	-0.03	
7.1	Sosa kareta	109.7	109.1	109.1	0.0%	-0.5%	1.78	1.79	0.01	
7.2	Utiliza equipamento transportasaun pessoal	113.3	107.8	106.7	-1.0%	-5.8%	4.16	4.11	-0.04	
7.3	Hadia transportasaun	100.0	100.0	100.0	0.0%	0.0%	2.92	2.93	0.01	
8	KOMUNIKASAUN	100.1	98.9	98.9	0.0%	-1.2%	4.87	4.83	-0.04	
8.1	Hadia equipamento telekomunikasaun	100.1	98.9	98.9	0.0%	-1.2%	4.87	4.83	-0.04	
9	REKREASAUN NO KULTURA	100.9	103.0	103.0	0.0%	2.1%	4.33	4.34	0.02	
9.1	Equipamentos audio visual, fotografian no produs informasaun	96.5	101.9	101.9	0.0%	5.6%	0.50	0.50	0.00	
9.2	Sasan rekreasaun no kultura	101.1	100.9	100.9	0.0%	-0.2%	2.02	2.03	0.01	
9.3	Jornal, livru no equipamento hakerek	102.0	105.7	105.7	0.0%	3.6%	1.80	1.81	0.01	
10	EDUKASAUN	124.1	127.2	127.2	0.0%	2.5%	3.98	3.99	0.01	
10	Edukasaun	124.1	127.2	127.2	0.0%	2.5%	3.98	3.99	0.01	


TABELA 3. BAUCAU - analytical index

Outubro 2024		Numeru Indise			Mudansa Persentajen		Pontu Kontribuisaun		Mudansa Pontu
		Out 2023	Set 2024	Out 2024	Out-24 to Set-24	Out-24 to Out-23	Set 2024	Out 2024	Out-24 to Set-24
Grupu Gastu									
a	GRUPU HOTU	112.9	113.1	113.1	0.0%	0.2%	113.1	113.1	0.00
1	HAHAN NO BEBIDAS	118.8	118.7	118.7	0.0%	-0.1%	67.47	67.47	0.00
1.1	Pao ho hahan husi Fós	114.8	119.6	119.6	0.0%	4.2%	2.27	2.36	0.09
1.2	Fós	137.7	138.8	138.7	-0.1%	0.7%	18.48	18.39	-0.08
1.3	Na'an	111.7	112.6	112.6	0.0%	0.8%	10.54	10.54	0.00
1.4	Ikan ho hahan tasi	122.2	125.0	125.0	0.0%	2.3%	3.96	3.94	-0.02
1.5	Susu ben, keju ho manu tolung	104.0	104.0	104.0	0.0%	0.0%	1.86	1.86	0.00
1.6	Bokurho mina	121.1	121.2	121.2	0.0%	0.1%	4.03	4.03	0.00
1.7	Frutas	88.3	87.9	87.9	0.0%	-0.5%	1.11	1.11	0.00
1.8	Vejetais	110.8	110.1	110.1	0.0%	-0.6%	11.76	11.76	0.00
1.9	Masin midar, marmelada, bani ben, chocolate	132.4	120.3	120.3	0.0%	-9.1%	5.59	5.59	0.00
1.10	Produtu Aihan	97.2	104.1	104.1	0.0%	7.1%	4.13	4.13	0.00
1.11	Café, xá, no cacao	110.0	110.0	110.7	0.6%	0.6%	2.78	2.80	0.02
1.12	Be, Bebidas, jus ai fuan no modo tahan	118.2	109.5	109.5	0.0%	-7.4%	0.92	0.92	0.00
1.13	Hahan preparadu	100.0	100.0	100.0	0.0%	0.0%	0.05	0.05	0.00
2	ALKOHOL HO TABAKU	132.5	136.5	136.5	0.0%	3.0%	9.90	9.90	0.00
2.1	Alkohol	117.0	128.1	128.1	0.0%	9.5%	3.39	3.39	0.00
2.2	Tabaku	141.3	141.3	141.3	0.0%	0.0%	6.52	6.52	0.00
3	HATAIS HO SAPATU	100.6	100.6	100.6	0.0%	0.0%	14.28	14.27	0.00
3.1	Roupa ba mane	110.4	110.4	110.4	0.0%	0.0%	3.23	3.23	0.00
3.2	Roupa ba feto	100.0	100.0	100.0	0.0%	0.0%	2.52	2.52	0.00
3.3	Roupa ba labarik ho bebe	102.5	102.5	102.5	0.0%	0.0%	3.82	3.82	0.00
3.4	Sapatu ho asesories ropa	93.8	93.8	93.8	0.0%	0.0%	4.71	4.71	0.00
4	UMA	107.2	107.2	107.2	0.0%	0.0%	2.79	2.79	0.00
4.2	Manutensaun no hadiak hela fatin	103.4	103.4	103.4	0.0%	0.0%	0.90	0.90	0.00
4.3	Be, eletrisidade, gas no sira seluk	109.2	109.2	109.2	0.0%	0.0%	1.89	1.89	0.00
MANUTENSAUN ROTINA BA EQUIPAMENTO NO MOBILARIO UMA LARAN									
5	UMA LARAN	92.1	92.6	92.6	0.0%	0.5%	8.13	8.14	0.02
5.1	Mobiliario no tekstil uma laran	94.2	94.2	94.2	0.0%	0.0%	0.12	0.12	0.00
5.2	Manutensaun uma laran	103.4	105.9	105.9	0.0%	2.4%	0.31	0.31	0.00
5.3	Sasan no kolen ba equipamento uma laran	91.7	92.1	92.1	0.0%	0.4%	7.70	7.72	0.02
6	SAUDE	113.2	104.6	104.6	0.0%	-7.6%	1.30	1.30	0.00
6.1	Produtu medicamentos no material equipamentos	113.9	103.9	103.9	0.0%	-8.8%	1.13	1.13	0.00
6.2	Doutor no atendimento husi hospital	108.9	108.9	108.9	0.0%	0.0%	0.17	0.17	0.00
7	TRANSPORTASAUN	108.4	106.8	106.5	-0.3%	-1.8%	1.63	1.62	-0.01
7.1	Sosa kareta	100.0	100.0	100.0	0.0%	0.0%	0.01	0.01	0.00
7.2	Utiliza equipamento transportasaun pessoal	130.1	124.4	123.2	-1.0%	-5.3%	0.53	0.52	0.00
7.3	Hadia transportasaun	100.0	100.0	100.0	0.0%	0.0%	1.09	1.09	0.00
8	KOMUNIKASAUN	100.0	100.0	100.0	0.0%	0.0%	4.74	4.73	0.00
8.1	Hadia equipamento telekomunikasaun	100.0	100.0	100.0	0.0%	0.0%	4.74	4.73	0.00
9	REKREASAUN NO KULTURA	101.0	101.0	101.0	0.0%	0.0%	1.79	1.79	0.00
9.1	Equipamentos audio visual, fotografian no produs informasaun	72.0	72.0	72.0	0.0%	0.0%	0.02	0.02	0.00
9.2	Sasan rekreasaun no kultura	102.5	102.6	102.6	0.0%	0.1%	0.99	0.99	0.00
9.3	Jornal, livru no equipamento hakerek	100.0	100.0	100.0	0.0%	0.0%	0.78	0.78	0.00
10	EDUKASAUN	100.0	100.0	100.0	0.0%	0.0%	1.08	1.08	0.00
10	Edukasaun	100.0	100.0	100.0	0.0%	0.0%	1.08	1.08	0.00



TABELA 2. OTHER - analytical index

		Numeru Indise			Mudansa Percentajen		Pontu Kontribuisaun		Mudansa Pontu
Outubro 2024		Out	Set	Out	Out-24	Out-24	Set	Out	Out-24
Grupu Gastu		2023	2024	2024	to Set-24	to Out-23	2024	2024	to Set-24
a	GRUPU HOTU	129.0	129.8	129.5	-0.2%	0.4%	129.8	129.5	-0.30
1	HAHAN NO BEBIDAS	136.2	138.9	138.7	-0.1%	1.8%	77.64	77.51	-0.13
1.1	Pao ho hahan husi Fós	113.5	112.2	111.5	-0.6%	-1.8%	2.36	2.33	-0.03
1.2	Fós	158.4	166.9	166.7	-0.1%	5.2%	26.55	26.51	-0.04
1.3	Na'an	109.3	110.1	110.1	0.0%	0.7%	8.11	8.12	0.01
1.4	Ikan ho hahan tasi	106.5	103.5	103.4	-0.1%	-2.9%	2.66	2.64	-0.01
1.5	Susu ben, keju ho manu tolu	125.8	125.2	123.0	-1.8%	-2.2%	2.23	2.19	-0.04
1.6	Bokurho mina	173.7	165.1	165.4	0.2%	-4.8%	7.48	7.50	0.03
1.7	Frutas	111.7	109.9	110.7	0.7%	-0.9%	0.82	0.83	0.01
1.8	Vejetais	145.8	156.7	155.9	-0.5%	6.9%	13.16	13.15	-0.01
1.9	Masin midar, marmelada, bani ben, chocolate	128.6	121.2	121.2	0.0%	-5.8%	6.81	6.74	-0.07
1.10	Produu Aihan	107.3	106.6	106.6	0.0%	-0.7%	4.23	4.24	0.01
1.11	Café, xá, no cacao	105.1	107.4	108.8	1.3%	3.5%	2.20	2.23	0.03
1.12	Be, Bebidas, jus ai fuan no modo tahan	115.5	123.6	123.6	0.0%	7.0%	0.77	0.77	0.00
1.13	Hahan preparadu	100.0	100.0	100.0	0.0%	0.0%	0.26	0.26	0.00
2	ALKOHOL HO TABAKU	188.8	180.7	179.3	-0.8%	-5.0%	14.82	14.73	-0.10
2.1	Alkohol	141.9	143.3	135.1	-5.7%	-4.8%	2.09	1.98	-0.11
2.2	Tabaku	198.9	188.9	188.9	0.0%	-5.0%	12.73	12.75	0.02
3	HATAIS HO SAPATU	102.6	103.4	103.4	0.0%	0.8%	6.29	6.33	0.04
3.1	Roupa ba mane	99.7	100.6	100.6	0.0%	0.9%	1.15	1.16	0.00
3.2	Roupa ba fetu	101.5	107.2	107.2	0.0%	5.6%	1.11	1.14	0.03
3.3	Roupa ba labarik ho bebe	109.3	109.3	109.5	0.2%	0.2%	2.21	2.21	0.01
3.4	Sapatu ho asesories ropa	97.8	96.5	96.5	0.0%	-1.3%	1.82	1.82	0.00
4	UMA	102.4	102.0	101.9	-0.1%	-0.5%	6.37	6.31	-0.06
4.1	Aluga uma	100.0	100.0	100.0	0.0%	0.0%	0.00	0.00	0.00
4.2	Manutensaun no hadiak hela fatin	106.3	106.3	106.0	-0.3%	-0.3%	1.78	1.78	0.00
4.3	Be, eletrisidade, gas no sira seluk	101.0	100.4	100.4	0.0%	-0.6%	4.59	4.53	-0.06
	MANUTENSAUN RUTINA BA EQUIPAMENTO NO MOBILARIO UMA LARAN								
5		100.7	99.6	99.0	-0.6%	-1.7%	8.14	8.11	-0.02
5.1	Mobiliario no tekstil uma laran	98.8	100.7	100.7	0.0%	1.9%	1.08	1.08	0.00
5.2	Manutensaun uma laran	98.6	96.2	96.7	0.5%	-1.9%	1.19	1.19	0.01
5.3	Sasan no kolen ba equipamento uma laran	101.4	100.0	99.2	-0.8%	-2.2%	5.87	5.84	-0.03
6	SAUDE	100.2	103.3	103.3	0.0%	3.1%	1.91	1.92	0.00
6.1	Produu medicamentos no material equipamentos	100.2	103.7	103.7	0.0%	3.5%	1.68	1.68	0.00
6.2	Doutor no atendimento husi hospital	100.3	100.3	100.3	0.0%	0.0%	0.24	0.24	0.00
7	TRANSPORTASAUN	118.6	117.3	117.0	-0.3%	-1.3%	5.49	5.48	-0.01
7.1	Sosa karetu	107.7	107.1	107.1	0.0%	-0.6%	1.13	1.13	0.00
7.2	Utiliza equipamento transportasaun pessoal	124.7	121.9	120.9	-0.8%	-3.0%	2.01	1.99	-0.02
7.3	Hadia transportasaun	119.4	119.0	119.0	0.0%	-0.3%	2.35	2.36	0.00
8	KOMUNIKASAUN	100.1	99.3	99.3	0.0%	-0.8%	4.67	4.64	-0.03
8.1	Hadia equipamento telekomunikasaun	100.1	99.3	99.3	0.0%	-0.8%	4.67	4.64	-0.03
9	REKREASAUN NO KULTURA	100.7	102.5	102.5	0.0%	1.8%	3.33	3.33	0.01
9.1	Equipamentos audio visual, fotografian no produu informasaun	96.4	101.8	101.8	0.0%	5.6%	0.28	0.28	0.00
9.2	Sasan rekreasaun no kultura	100.5	100.5	100.5	0.0%	0.0%	1.96	1.96	0.00
9.3	Jornal, livru no equipamento hakerek	102.2	106.6	106.6	0.0%	4.3%	1.08	1.08	0.00
10	EDUKASAUN	123.4	124.4	124.4	0.0%	0.8%	1.14	1.14	0.00
10	Edukasaun	123.4	124.4	124.4	0.0%	0.8%	1.14	1.14	0.00



NOTAS ESPLIKASAUN

NOTA BA UZA NAIN

IPK serie 3 inkorpora rezultadu husi revisaun bo'ot no troka todan iha IPK Timor Leste. Todan IPK serie 3 baseia ba rezultadu *Living Standard Survey (LSS) 2014-15*. Iha informasaun rua ne'ebe publika kona-ba revisaun. Primeru, *Review of Timor Leste Consumer Price Index (CPI): Series 3 2018: Issues for Consideration* publika iha 2017, ne'ebe husu no buka hatene opiniaun uza nain sira kona-ba revisaun no todan foun ne'ebe sei aplika iha serie 3. Segundu, *Technical Note of Timor Leste Consumer Price Index Series 3 Reweight* publika iha Outubro 2018, kona-ba metodolojia no rezultadu IPK serie 3. Informasaun rua ne'e bele hare iha portál INE-TL www.inetl-ip.gov.tl

DESKRISAUN BADAK BA IPK

IPK sukat mudansa presu kada periodu husi raga produktu no servisu ne'ebe sura proporsaun despeza husi rezidente uma kain. Raga ida ne'e kobre produktu no servisu oin-oin, hanesan iha grupu 10 tuir mai ne'e: 1. Hahan no Bebidas laos Alkohol; 2. Alkohol no Tabaku; 3. Hatais no Sapatu; 4. Uma; 5. Manutensaun Rutina no Ekipamentu Uma; 6. Saude; 7. Transporte; 8. Komunikaun; 9. Rekreaun no kultura; 10. Edukasaun.

Informasaun klaru liu tan kona-ba IPK Timor Leste no matadalan ba IPK Timor Leste bele hare iha portál INE-TL iha www.inetl-ip.gov.tl

PUBLIKASAUN INDISE

Indise Presu Konsumidór produs husi Instituto Nacional de Estatística, I.P. kada fulan.

Indise primeru ne'ebe publika husi INE-TL maka Indise Presu Konsumedór Timor Leste. Dadus ba indise nasional aprezena iha gráfico no tabela 1 publikasaun.

INE-TL mos publika indise tolu seluk ne'ebe ho objetivu analiza nian - primeiru, reprezeta mudansa presu ba munisipiú Dili, segundu, Representa mudansa presu ba munisipiú Baucau no terseiru representa mudansa presu ne'ebe kobre munisipiú seluk iha Timor Leste (hanaran "OTHER"). Iha serie indise IPK ne'e kompila uza raga produktu ne'ebe aprezena iha tabela 2, 3, no 4 iha publikasaun.

REKOILA PRESU BA IPK

Presu ba produktu no servisu maioria liu kolekta husi staf ou ekipa IPK ne'ebe servisu iha eskritóriu nasional iha Dili. Presu ba produktu husi munisipiú kolekta husi staf sira ne'ebe servisu iha eskritóriu estatística iha kada munisipiú, amostra presu balun kolekta husi survei espesiál.

MODELU TODAN

Grupú bot 10 iha IPK serie 3 fahe ba grupú gastu 35 no kada grupú gastu iha todan ketak. Bainhira halo kalkulasiun indise, uza todan iha kada grupú gastu ne'e halo kombinasaun ba mudansa presu iha kada grupú gastu. Modelu todan iha IPK serie 3 mos bele haree iha portál INE-TL iha www.inetl-ip.gov.tl



ANÁLIZA BA MUDANSA PRESU

Mudansa indise husi periodu ba periode bele espresa hanesan mudansa pontu indise ou bele mos mudansa persentajen. Mudansa persentajen kalkula uza movimentu númeru indise rua ne'ebe diferente:

Mudansa entre fulan hanesan kada tinan tutuir malu

Mudansa entre fulan tutuir malu

$$\text{Mudansa persentajen (\%)} = \frac{\text{indise}_t - \text{indise}_{t-1}}{\text{indise}_{t-1}} \times 100\%$$

Ezemplu tuir mai esplika metodu kalkula mudansa pontu indise ou mudansa persentajen entre periode rua:

Indise fulan Janeiru 2013 101,4

Indise fulan janeiru 2012 90,7

$$\text{Mudansa persentajen (\%)} = \frac{101,4 - 90,7}{90,7} \times 100\%$$

$$\text{Mudansa persentajen (\%)} = \frac{10,7}{90,7} \times 100\%$$

$$\text{Mudansa persentajen (\%)} = 0,11797133 \times 100\%$$

$$\text{Mudansa persentajen (\%)} = 11,8\%$$

Kada tabela iha publikasaun fornese detailu konaba análize movimentu iha IPK no inklui mos informasaun ba mudansa iha grupu IPK no mos grupu gastu iha grupu IPK nia laran. Iha tabela ne'e mos hatudu kontribuisaun husi kada grupu gastu ba total IPK. Ezemplu, IPK Timor Leste 2013 hetan kontribuisaun 17,85 pontu indise husi grupu fôs no total grupu hotu iha IPK hetan númeru IPK 101,3 iha Janeiru 2013. Iha koluna final hatudu kontribuisaun ba mudansa pontu indise grupu hotu inklui grupu gastu.

RONDE (ROUNDING)

Númeru indise ne'ebe publika babain ronde ba decimal ida, no mudansa persentajen (ronde ba decimal ida) kalkula husi númeru indise ne'ebe ronde tiha ona. Hanesan mos, ida ne'e posivel bele rezutla mudansa persentajen ba nivel grupu IPK diferente ho mudansa persentajen ba nivel indise komponente (ezemplu, mudansa persentajen total grupu hotu iha IPK diferente ho mudansa persentajen ba grupu gastu ne'ebe iha grupu IPK nia laran)

REVIZAUN

Revizaun ba indise orijinal IPK bele halo bainhira iha sirkunstánsia exesional, hanesan atu halo koresaun ba erru signifikante ida. Periodu referénsia indise (ezemplu, periodu ne'ebe estabelese valor indise 100.0 iha tinan Agosto 2018) sei muda periodikamente.

DADUS DISPONIVEL

Hanesan estatistik ou dadus ne'ebe hatudu iha publikasaun ida ne'e, iha dadus ne'ebe detailu liu tan (iha formatu tempu oin-oin/ in *time seires format*) disponivel iha portal INE-TL .



INSTITUTO NACIONAL DE ESTATÍSTICA
TIMOR-LESTE, I.P.

Instituto Nacional de Estatística, I.P.
Rua de Caicoli, Po Box 10
Dili, Timor-Leste
www.inetl-ip.gov.tl