



INDISE PRESU KONSUMEDOR TIMOR-LESTE FEVEREIRO 2024

EDISAUN IPK SERI 3

Data publikasaun:
19 Março 2024

Publikasaun tuir mai:
16 Abril 2024



INSTITUTO NACIONAL DE ESTATÍSTICA
TIMOR-LESTE, I.P.



Ministerio das Finanças



Titlu

Indise Presu Konsumedor Timor-Leste,
Fevereiro 2024

Editor

Jemi Natalino Rosario
Rosantina da Costa Cruz Sarmiento
Eduardo M. Ximenes
Silvino Lopes

Instituto Nacional de Estatística, I.P.
Rua de Caicoli, PO Box 10
Dili, Timor-Leste

Prezedente Instituto Nacional de Estatística, I.P.

[Elias dos Santos Ferreira, L.Ec., MM.](#)

Dezeñu no Kompozisaun
Instituto Nacional de Estatística Timor Leste, I.P.



www.inetl-ip.gov.tl

Cristino Gusmão
Director Nacional Economia Estatistica
No. Telf: + 670 77230127
Instituto Nacional de Estatística Timor Leste, I.P.
Rua de Caicoli, Dili, PO Box 10
Telephone: +670 3311348
email: cguasmao@mof.gov.tl

NOTA

MUDANSA IHA EDISAUN INTRUDUSAUN Laiha
IPK SERI 3

EDISAUN TUIR MAI	PUBLIKASAUN	DATA PUBLIKA
	Março 2024	16 Abril 2024
	Abril 2024	21 Maio 2024

INFORMASAUN

**Atu Hatene informasaun kona ba informasaun
ne'ebe iha Relasaun ho IPK, kontaktu:**

1. Cristino Gusmão, Director da DNEES
Email: cgusmao@mof.gov.tl, No Telf: 77230127
2. Eduardo Martinho Ximenes, Head of Depart. Social and Economic
Email: emximenes@mof.gov.tl, No Telf. 77339216
3. Jemi Natalino Rosario
Email: jnrosario@mof.gov.tl, No. Telf. 7754 3554
4. Rosantina da Costa Cruz Sarmentu
Email: rcsarmento@mof.gov.tl, No Telf. 77085481



Elias dos Santos Ferreira, L.Ec., MM.
Prezidente Instituto Nacional de Estatistica



Konteudu

1. Kontiudu.....	1
2. Nemeru Importante Fevereiro 2024.....	2
3. Pontus Importante Fevereiro 2024.....	3
4. Saida Maka Mudansa Importante?.....	5
5. Tradable & Non-Tradable CPI.....	6
6. Tabela 1 : Indise Analitiku Timor-Leste Fulan Fevereiro 2024.....	7
7. Tabela 2 : Indise Analitiku Rejiaun Dili Fulan Fevereiro 2024.....	8
8. Tabela 3 : Indise Analitiku Rejiaun Baucau Fulan Fevereiro 2024.....	9
9. Tabela 4 : Indise Analitiku Rejiaun OTHER fulan Fevereiro 2024.....	10
10. Nota Esplikasaun	11



INDISE PRESU KONSUMEDOR TIMOR LESTE, FEVEREIRO 2024

INTRODUSAUN IPK SERI 3

IPK Timor-Leste edisaun seri 3 ne'e sei publika kada fulan hahu husi edisaun fulan Setembro 2018. Sei publika mos analiza mensal husi indise Timor Leste, Dili, Baucau no Other. Publikasaun hotu-hotu husi Indise Setembro 2018 refere fali ba Agosto 2018=100.0 (*hanesan fulan/tinan base ba IPK seri 3*). Tempu seri data nian detailu konaba todan IPK foun, no informasaun seluk relasiona ba movimentu IPK Timor-Leste, bele hare iha INE-TL website www.inetl-ip.gov.tl

Numerus Save Fevereiro 2024

(a) Ba Marco, Junho, no Setembro 2013, mudansa persentajen anual kalkula baseia ba kada trimestral. Ba Dezembro 2013 ba oin mudansa anual sei kalkula baseia ba fulan ne'ebe hanesan kada tinan.

Indise Presu Konsumedor Timor-Leste	Mensal	Anual (a)
	Fev - 2024 to Jan - 2024	Fev - 2024 to Fev - 2023
	Mudansa %	Mudansa %
Grupu hotu IPK	0.2%	3.9%
Tradable	0.0%	5.1%
Non-Tradable CPI	0.5%	0.8%
1. Hahan no bebidas la'os Alkoholika	0.2%	7.4%
2. Alkohol ho tabaku	-0.1%	2.4%
3. Hatais ho sapatu	0.0%	0.0%
4. Uma	0.1%	-1.5%
5. Manutensaun rutina ba equipmentu no mobiliariu uma kain	-0.1%	-3.6%
6. Saude	0.0%	0.0%
7. Transportasaun	-0.1%	-3.5%
8. Komunikasaun	0.0%	-0.2%
9. Rekreaun no kultura	0.0%	1.5%
10. Edukasaun	0.0%	2.0%



Save Importante Feveiro 2024

- IPK grupu hotu sa'e (+0.2%) iha Feveiro 2024, kompara ba tun (-0.4%) iha fulan Janeiro 2024.
- Presu sa'e signifikante iha grupu Hahan no Bebidas La'os Alkoholika (+0.2%), no Uma (+0.1%). Grupus Transporte (-0.1%), Alkohol no Tabako (-0.1%) no Ekipamentu no Manutensaun Mobiliari Uma Laran (-0.1%) sai hanesan mudansa kontrariu ba inflasaun grupu hotu.
- IPK Tradeable anual sa'e +5.1%, no IPK Non-Tradable sa'e mos +0.8%.

Deskripsaun Badak ba Inflasaun Presu Konsumedor

Inflasaun Presu Konsumedor hanesan sasukat ida ba nivel presu ba produto no servisu sira nebe kompra no konsume husi uma kain, ne'ebe bele mos sa'e ou tun. inflasaun Presu Konsumedor sukat uza indise presu konsumedor. Komprensaun ba indise presu konsumedor maka presu ba produto no servisu nebe ita determina sai hanesan ita nia raga kompra nebe uma kain konsume maioria, indise presu sukat mudansa kustu ou presu ba raga kompra ida ne'e.

Indise presu bele utiliza ba sukat inflasaun. En-jeral liu maka hare ba mudansa indise presu kada tinan nebe halo komparaun entre fulan ida agora (fulan A tinan agora) ba fulan nebe hanesan iha tinan kotuk (fulan A tinan kotuk). Ida ne'e bolu hanesan nivel inflasaun 12-fulan (tinan). Buletin ida ne'e sukat inflasaun ba fulan Feveiro 2024, ho ida ne'e nivel inflasaun 12-fulan nia maka kompara indise presu fulan Feveiro 2024 ba Feveiro 2023.

Numeru Ikus no Tendesia Longu-Prazu

Nivel IPK anual entre Feveiro 2024 ba Feveiro 2023 sa'e +3.9%. Signifika katak kustu ba raga produto no servisu sira ne'ebe ho \$100.00 iha Feveiro 2023 sa'e ba \$100.39 iha Feveiro 2024.

IPK anual sa'e (+3.9%) iha tinan ida ne'e ho kalendariu fulan Feveiro 2024. Kontributor bo'ot liu presu sa'e ida ne'e hetan kontribuisaun husi grupu Hahan no Bebidas laos Alkoholika (+7.4%), ne'ebe afeta husi subgrupu Foos (+27.9%), Modo Tahan (+8.5%), Masin Midar, Marmelada, Baniben, Cokolat no Hahan Midar (+2.8%), ikan no hahan tasi (+1.4%), Be, Bebidas, Jus no Jus vejetais (+7.5%) no Produktu Ai-han (+2.9%). Sub Grupus Mina no Bokur (-10.1%), Susubeen, Keiju no Manutolun (-1.0%), Naan (-0.2%), Aifuan (-5.1%), Kafe, Xa, no Kokoa (-1.9%) no Paun no Sereal (-1.2%) sai hanesan mudansa kontrariu ba inflasaun hahan no bebidas la'os alkoholika. Grupus Alkohol no Tabako (+2.4%), Edukasaun (+2.0%), no Rekreaun no Kultura (+1.5%). Grupus Transporte (-3.5%), Ekipamentu no Manutensaun Mobiliari Uma Laran (-3.6%), Uma (-1.5%), no Komunikasaun (-0.2%) sai hanesan mudansa kontrariu ba inflasaun grupu hotu.

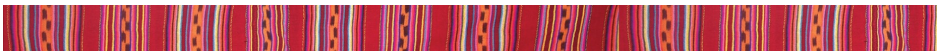
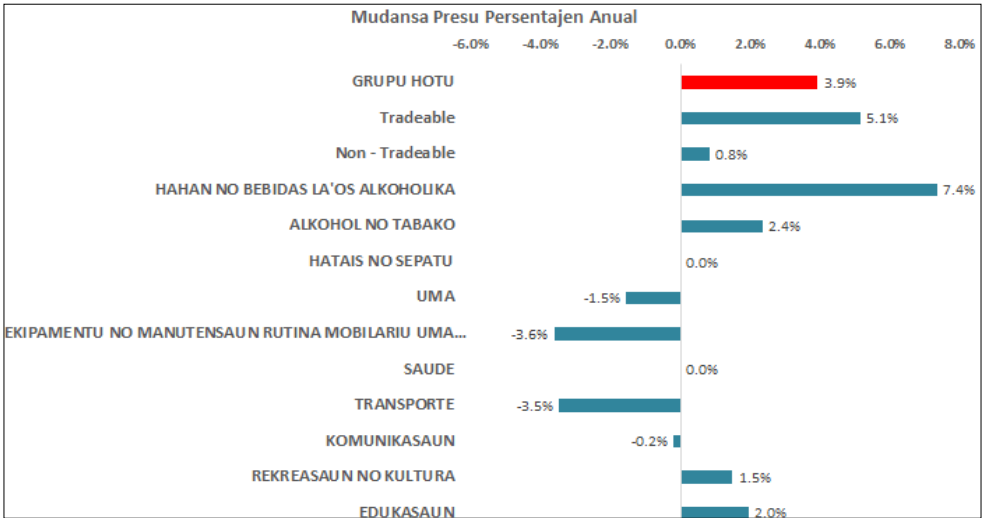


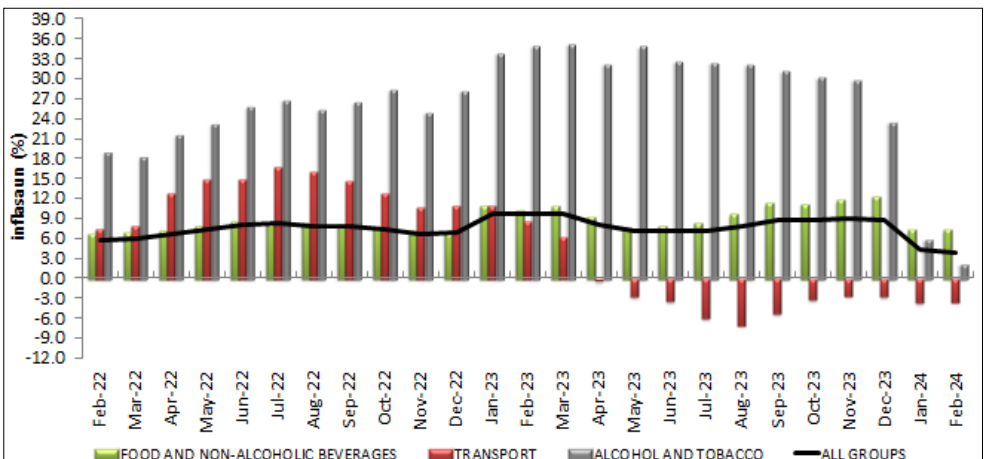
Figura A: Kontribusi saun ba nivel IPK anual, Fevereiro 2024



Fontes: Instituto Nacional de Estadística, I.P., Ministerio das Finanzas

Notas: Kontribusi saun individu (kada item) lahatudu ba iha total tanba arredondar (rounding).

Figura B: Tendensia inflasaun anual ba periode Fevereiro 2022 to'o Fevereiro 2024



Període inflasaun ne'ebe hatudu iha període Fevereiro 2022 to'o Fevereiro 2024 hetan impaktu husi presu grupu Hahan no Bebidas Laos Alkoholika, grupu Transporte no grupu Alkohol no Tabako. Depois akontese fali inflasaun anual iha període tuir mai tanba afeta husi presu grupu Hahan no Bebidas Laos Alkoholika ne'ebe sa'e fali.

*Core CPI hetan husi IPK grupu hotu menus IPK grupu Hahan no Bebidas laos Alkoholika no Transportasaun

Indise Presu Konsumedor (IPK): saida maka mudansa importante?

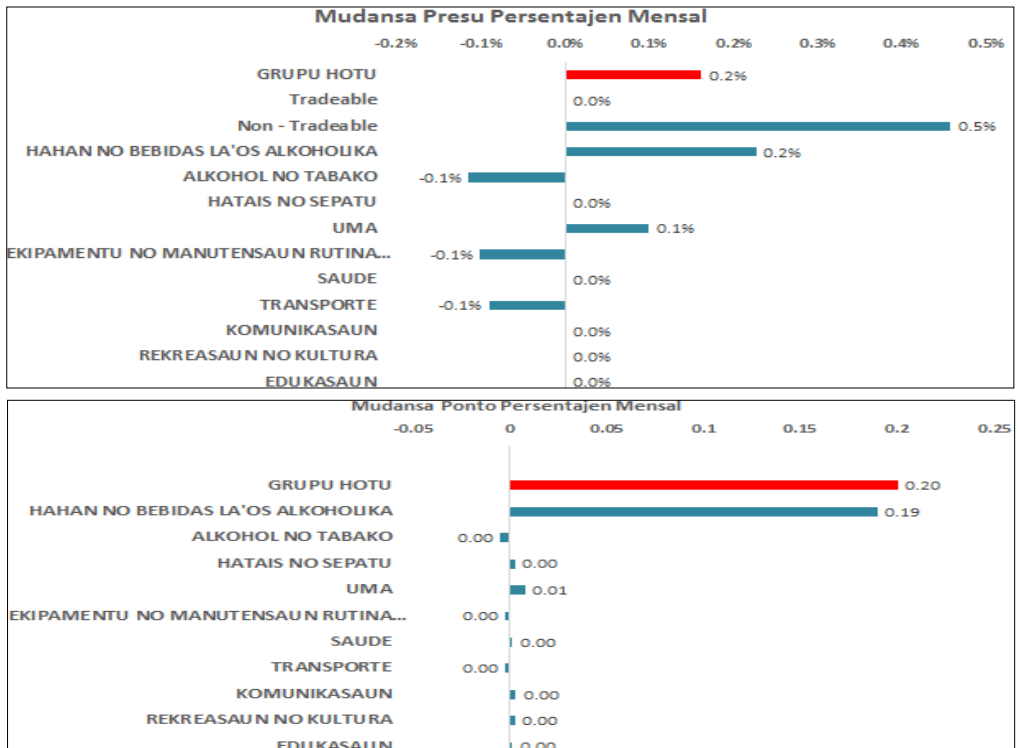
Kontribuisaun importante ba nivel IPK mensal sa'e (+0.2%) entre Fevereiro 2024 no Janeiro 2024, mai husi:

- **Hahan no Bebidas laos Alkoholika (+0.2%):** afeita husi sub grupu Modo Tahan (+0.9%), Be, Bebidas no Jus Ai-fuan (+2.3%), Foos (+0.1%), Susubeen, Keiju no Manutolun (+0.3%), no Naan (+0.1%). Sub grupu Mina no Bokur (-0.3%), Ai-fuan (-1.0%) no Paun no Sereal (-0.4%) sai hanesan mudansa kontrariu ba inflasaun grupu hahan no bebidas la'os alkoholika.
- **Uma (+0.1%):** afeita mai husi sub grupu Manutensaun no Hadia Uma Laran (+0.3%)

Iha parte seluk, inflasaun grupu hotu hetan mudansa kontrariu husi grupu:

- **Transporte (-0.1%):** afeta husi sub grupu Operasional ba Ekipamentu Transporte Privadu (-0.3%).
- **Alkohol no Tabako (-0.1%):** Afeita husi sub grupu Tabako (-0.2%).
- **Ekipamentu no Manutensaun Mobilariu Uma Laran (-0.1%):** afeta husi sub grupu Hadia Uma Laran (-1.1%)

Figura C: Kontribuisaun ba mudansa nivel IPK mensal, Fevereiro 2024 – Janeiro 2024



fontes: Instituto Nacional de Estatística, Ministerio das Finansas

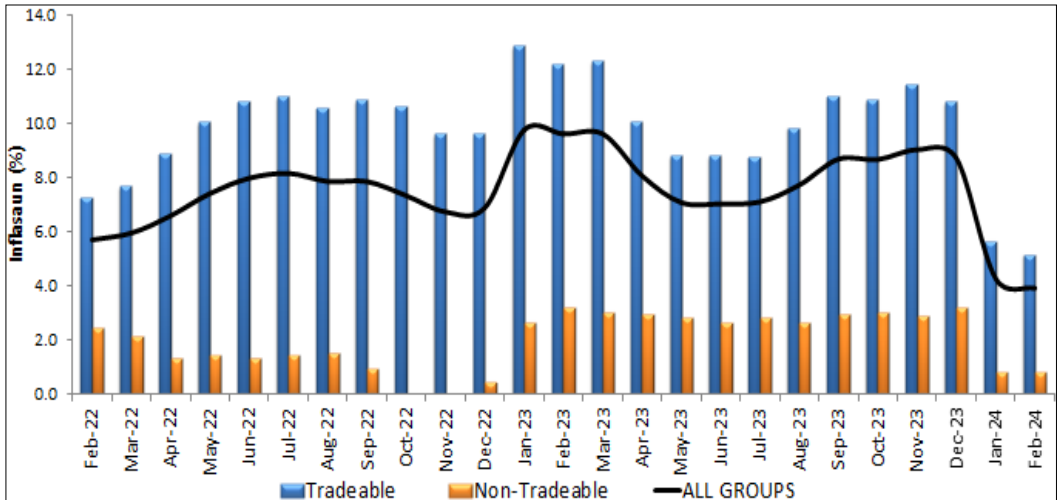
Notas: Kontribuisaun individu (kada item) lahatudu ba iha total tanba arredondar (rounding).

IPK Tradeable no Non-Tradeable

IPK Tradeable no Non-Tradeable, sukat kontribuisaun husi inflasaun domestika (non-tradeable) no importa (tradeable) ba inflasaun en-jeral. Identifikasaun fonte fator inflasaun umakain (konsumedor) ida ne'e suporta atu komprende fator diferente ne'ebe fo impaktu ba inflasaun, nune'e mos ajuda desizaun politika moneter no fiskal.

Definisaun produto no servisu tradeable maka hanesan ida ne'ebe dependensia ba nivel kompetisuan merkadu internasional, no presu produto no servisu sira ne'e hetan influencia husi kompetisaun refere. Hanesan mos, produto no servisu non-tradeable ne'ebe iha depedensia ki'ik liu ba kompetisaun merkadu internasional, no presu produto no servisu sira ne'e konsidera la hetan impaktu direta husi kompetisaun refere. Inflasaun ba produto no servisu non-tradeable reprezenta nivel situasaun ne'ebe nesidade barak liu (ou ki'ik liu) duke forneseimentu iha ekonomia domestiku. Produto no servisu tradeable sai hanesan depedensia maka'as liu ba kompetisaun internaional, ne'ebe inklui hanesan produto importa televisaun no komputador nomos produto hahan sira seluk. Presu produto sira ne'e hetan influencia presu bot liu husi presu internasional iha merkadu mundial no fluktuasaun valor osan, duke husi fator ekonomia domestiku.

Figura E: Kontribuisaun IPK Tradeable no Non-Tradeable ba Inflasaun Anual, Kompara Feb 24 - Feb 22



Fontes: Instituto Nacional de Estatística, Ministerio das Finanças

Notas: Kontribuisaun individu (kada item) lahatudu ba iha total tanba *arredondar* (rounding).

Iha referensia grafiku E, inflasaun anual positivu hanesan hatudu iha periode 2022 to'o 2024, hetan impaktu husi fator internasional sira hanesan hatudu iha nivel IPK tradeable. Nivel inflasaun anual agora dadaun +3.9%, ne'ebe afeta husi kontribuisaun Tradeable (+5.1%) no Non-Tradeable sa'e mos (+0.8%). Series analitiku indika katak nivel inflasaun agora dadaun hetan presau husi presu merkadoria internasional no valor osan ne'ebe fluktuativu.

TABELA 1. TIMOR-LESTE IPK

Fevereiro 2024		Numeru Indise			Mudansa Persentajen		Pontu Kontribuisaun		Mudansa Pontu
		Fev 2023	Jan 2024	Fev 2024	Fev-24 to Jan-24	Fev-24 to Feb-23	Jan 2024	Fev 2024	Fev-24 to Jan-24
		Grupu Gastu							
a	GRUPU HOTU	119.7	124.2	124.4	0.2%	3.9%	124.2	124.4	0.20
c	IPK Tradable	124.3	130.7	130.7	0.0%	5.1%			
d	IPK Non-Tradable	109.1	109.5	110.0	0.5%	0.8%			
1	HAHAN NO BEBIDAS	123.7	132.5	132.8	0.2%	7.4%	71.70	71.89	0.19
1.1	Pao ho hahan husi Fós	112.5	111.6	111.1	-0.4%	-1.2%	2.57	2.57	-0.01
1.2	Fós	119.7	153.0	153.1	0.1%	27.9%	19.18	19.20	0.02
1.3	Na'an	109.8	109.5	109.6	0.1%	-0.2%	8.86	8.87	0.01
1.4	Ikan ho hahan tasi	104.1	105.6	105.6	0.0%	1.4%	3.31	3.31	0.00
1.5	Susu ben, keju ho manu tolu	125.0	123.4	123.8	0.3%	-1.0%	2.66	2.67	0.01
1.6	Bokurho mina	168.6	152.0	151.6	-0.3%	-10.1%	5.61	5.60	-0.01
1.7	Frutas	110.7	106.1	105.0	-1.0%	-5.1%	1.38	1.37	-0.01
1.8	Vejetais	149.5	160.7	162.2	0.9%	8.5%	14.91	15.07	0.15
1.9	Masin midar, marmelada, bani ben, chocolate	120.2	123.6	123.6	0.0%	2.8%	5.55	5.55	0.00
1.10	Produutu Aihan	105.1	108.2	108.2	0.0%	2.9%	4.19	4.20	0.00
1.11	Café, xá, no cacao	108.0	106.0	106.0	0.0%	-1.9%	1.92	1.92	0.00
1.12	Be, Bebidas, jus ai fuan no modo tahan	109.8	115.4	118.0	2.3%	7.5%	0.90	0.92	0.02
1.13	Hahan preparadu	100.0	100.0	100.0	0.0%	0.0%	0.64	0.64	0.00
2	ALKOHOL HO TABAKU	170.2	174.4	174.2	-0.1%	2.4%	12.21	12.20	0.00
2.1	Alkohol	130.6	137.2	137.7	0.4%	5.4%	2.26	2.27	0.01
2.2	Tabaku	182.4	185.9	185.5	-0.2%	1.7%	9.94	9.93	-0.01
3	HATAIS HO SAPATU	103.4	103.4	103.4	0.0%	0.0%	7.19	7.19	0.00
3.1	Roupa ba mane	103.2	102.3	102.2	-0.1%	-1.0%	1.26	1.26	0.00
3.2	Roupa ba feto	101.0	103.7	103.7	0.0%	2.7%	1.21	1.21	0.00
3.3	Roupa ba labarik ho bebe	110.0	110.1	110.1	0.0%	0.1%	2.63	2.64	0.00
3.4	Sapatu ho asesories ropa	97.5	96.6	96.6	0.0%	-0.9%	2.09	2.09	0.00
4	UMA	103.3	101.6	101.7	0.1%	-1.5%	6.39	6.40	0.01
4.1	Aluga uma	96.5	100.0	100.0	0.0%	3.6%	0.07	0.07	0.00
4.2	Manutensaun no hadiak hela fatin	107.4	106.9	107.2	0.3%	-0.2%	1.11	1.11	0.00
4.3	Be, eletrisidade, gas no sira seluk	102.6	100.6	100.6	0.0%	-1.9%	5.21	5.21	0.00
5	MANUTENSAUN RUTINA BA EQUIPAMENTO NO MOBILIARIO UMA LARAN	102.2	98.6	98.5	-0.1%	-3.6%	7.74	7.74	0.00
5.1	Mobiliario no tekstul uma laran	101.0	101.2	100.7	-0.5%	-0.3%	1.07	1.07	0.00
5.2	Manutensaun uma laran	106.3	96.9	95.8	-1.1%	-9.9%	1.02	1.00	-0.01
5.3	Sasan no kolen ba equipamento uma laran	101.6	98.5	98.6	0.1%	-3.0%	5.65	5.67	0.01
6	SAUDE	101.0	101.0	101.0	0.0%	0.0%	1.95	1.95	0.00
6.1	Produutu medicamentos no material equipamentos	101.0	101.0	101.0	0.0%	0.0%	1.71	1.71	0.00
6.2	Doutor no atendimento husi hospital	100.7	100.7	100.7	0.0%	0.0%	0.25	0.25	0.00
7	TRANSPORTASAUN	115.1	111.2	111.1	-0.1%	-3.5%	6.47	6.47	0.00
7.1	Sosa kareta	119.1	108.2	108.2	0.0%	-9.2%	1.27	1.27	0.00
7.2	Utiliza equipamento transportasaun pessoal	119.1	115.2	114.9	-0.3%	-3.5%	2.74	2.74	-0.01
7.3	Hadia transportasaun	108.8	108.6	108.6	0.0%	-0.2%	2.45	2.45	0.00
8	KOMUNIKASAUN	100.3	100.1	100.1	0.0%	-0.2%	4.76	4.77	0.00
8.1	Hadia equipamento telekomunikasaun	100.3	100.1	100.1	0.0%	-0.2%	4.76	4.77	0.00
9	REKREASAUN NO KULTURA	100.8	102.3	102.3	0.0%	1.5%	3.55	3.56	0.00
9.1	Equipamentos audio visual, fotografian no produs informasaun	96.3	96.9	96.9	0.0%	0.6%	0.33	0.33	0.00
9.2	Sasan rekreasaun no kultura	100.9	100.9	100.9	0.0%	0.0%	1.89	1.90	0.00
9.3	Jornal, livru no equipamento hakerek	102.0	105.8	105.8	0.0%	3.7%	1.33	1.34	0.00
10	EDUKASAUN	122.5	124.9	124.9	0.0%	2.0%	2.23	2.24	0.00
10.1	Edukasaun	122.5	124.9	124.9	0.0%	2.0%	2.23	2.24	0.00



TABELA 2. DILI - analytical index

Fevereiro 2024		Numeru Indise			Mudansa Persentajen		Pontu Kontribuisaun		Mudansa Pontu
		Fev 2023	Jan 2024	Fev 2024	Fev-24 to Jan-24	Fev-24 to Feb-23	Jan 2024	Fev 2024	Fev-24 to Jan-24
Grupú Gastu									
a	GRUPU HOTU	119.1	120.1	120.3	0.2%	1.0%	120.1	120.3	0.20
1	HAHAN NO BEBIDAS	126.3	128.7	129.1	0.3%	2.2%	65.70	65.92	0.22
1.1	Pao ho hahan husi Fós	109.6	108.8	108.7	-0.1%	-0.8%	2.92	2.92	0.00
1.2	Fós	120.2	130.0	130.7	0.5%	8.7%	10.22	10.29	0.06
1.3	Na'an	109.5	109.1	109.0	-0.1%	-0.5%	9.53	9.53	-0.01
1.4	Ikan ho hahan tasi	100.9	102.7	102.7	0.0%	1.8%	4.00	4.00	0.00
1.5	Susu ben, keju ho manu tolu	124.0	123.2	123.6	0.3%	-0.3%	3.38	3.39	0.01
1.6	Bokurho mina	145.2	120.6	120.6	0.0%	-16.9%	3.20	3.20	0.00
1.7	Frutas	109.2	106.5	106.2	-0.3%	-2.7%	2.18	2.18	-0.01
1.8	Vejetais Masin midar, marmelada, bani ben, chocolate	170.7	185.8	187.0	0.6%	9.5%	18.71	18.84	0.13
1.9	Produtu Aihan	134.6	120.0	120.0	0.0%	-10.8%	3.64	3.64	0.00
1.10	Produtu Aihan	108.6	112.0	112.0	0.0%	3.1%	4.17	4.17	0.00
1.11	Café, xá, no cacao	108.4	103.2	103.2	0.0%	-4.8%	1.36	1.36	0.00
1.12	Be, Bebidas, jus ai fuan no modo tahan	106.8	109.6	113.1	3.2%	5.9%	1.07	1.11	0.03
1.13	Hahan preparadu	100.0	100.0	100.0	0.0%	0.0%	1.30	1.30	0.00
2	ALKOHOL HO TABAKU	159.6	169.5	168.8	-0.4%	5.8%	9.01	8.98	-0.03
2.1	Alkohol	127.0	133.6	133.9	0.2%	5.4%	2.20	2.21	0.01
2.2	Tabaku	174.2	185.7	184.5	-0.6%	5.9%	6.81	6.77	-0.04
3	HATAIS HO SAPATU	105.8	105.7	105.6	-0.1%	-0.2%	6.58	6.58	0.00
3.1	Roupa ba mane	100.5	99.1	99.0	-0.1%	-1.5%	0.90	0.90	0.00
3.2	Roupa ba fetu	101.2	104.8	104.8	0.0%	3.6%	1.00	1.00	0.00
3.3	Roupa ba labarik ho bebe	114.2	113.7	113.7	0.0%	-0.4%	2.90	2.90	0.00
3.4	Sapatu ho asesories ropa	99.1	98.2	98.1	-0.1%	-1.0%	1.79	1.79	0.00
4	UMA	101.9	100.1	100.1	0.0%	-1.8%	7.36	7.36	0.00
4.1	Aluga uma	96.5	100.0	100.0	0.0%	3.6%	0.17	0.17	0.00
4.2	Manutensaun no hadiak hela fatin	110.7	110.1	111.0	0.8%	0.3%	0.25	0.26	0.00
4.3	Be, eletrisidade, gas no sira seluk	101.8	99.7	99.7	0.0%	-2.1%	6.93	6.93	0.00
5	MANUTENSAUN RUTINA BA EQUIPAMENTO NO MOBILARIO UMA LARAN	102.5	99.1	99.1	0.0%	-3.3%	7.09	7.10	0.00
5.1	Mobiliario no tekstil uma laran	100.7	100.4	100.1	-0.3%	-0.6%	1.29	1.28	0.00
5.2	Manutensaun uma laran Sasan no kolen ba equipamento uma laran	106.4	96.7	95.5	-1.2%	-10.2%	0.96	0.95	-0.01
5.3		102.2	99.2	99.5	0.3%	-2.6%	4.85	4.86	0.02
6	SAUDE	100.0	100.0	100.0	0.0%	0.0%	2.21	2.21	0.00
6.1	Produtu medicamentos no material equipamentos	100.0	100.0	100.0	0.0%	0.0%	1.93	1.94	0.00
6.2	Doutor no atendimento husi hospital	100.0	100.0	100.0	0.0%	0.0%	0.28	0.28	0.00
7	TRANSPORTASAUN	111.4	106.3	106.3	0.0%	-4.6%	8.95	8.95	0.00
7.1	Sosa kareta Utiliza equipamento transportasaun pessoal	119.5	109.1	109.1	0.0%	-8.7%	1.78	1.78	0.00
7.2		116.5	110.0	110.0	0.0%	-5.6%	4.24	4.24	0.00
7.3	Hadia transportasaun	100.0	100.0	100.0	0.0%	0.0%	2.93	2.93	0.00
8	KOMUNIKASAUN	100.5	100.1	100.1	0.0%	-0.4%	4.88	4.89	0.00
8.1	Hadia equipamento telekomunikasaun	100.5	100.1	100.1	0.0%	-0.4%	4.88	4.89	0.00
9	REKREASAUN NO KULTURA	100.9	102.5	102.5	0.0%	1.6%	4.32	4.32	0.00
9.1	Equipamentos audio visual, fotografian no produs informasaun	96.5	97.1	97.1	0.0%	0.6%	0.48	0.48	0.00
9.2	Sasan rekreasaun no kultura	101.1	101.1	101.1	0.0%	0.0%	2.03	2.03	0.00
9.3	Jornal, livru no equipamento hakerek	102.0	105.7	105.7	0.0%	3.6%	1.81	1.81	0.00
10	EDUKASAUN	124.1	127.2	127.2	0.0%	2.5%	3.99	3.99	0.00
10	Edukasaun	124.1	127.2	127.2	0.0%	2.5%	3.99	3.99	0.00



TABELA 3. BAUCAU - analytical index

		Numeru Indise			Mudansa Persentajen		Pontu Kontribuisaun		Mudansa Pontu
Fevereiro 2024		Fev	Jan	Fev	Fev-24	Fev-24	Jan	Fev	Mudansa Pontu
		2023	2024	2024	to	to	2024	2024	to
Grupu Gastu					Jan-24	Fev-23			Jan-24
a	GRUPU HOTU	107.0	113.0	112.8	-0.2%	5.4%	113.0	112.8	-0.20
1	HAHAN NO BEBIDAS	107.8	118.4	118.1	-0.3%	9.6%	67.28	67.09	-0.19
1.1	Pao ho hahan husi Fós	114.8	114.8	112.4	-2.1%	-2.1%	2.27	2.22	-0.05
1.2	Fós	91.6	137.8	137.0	-0.6%	49.6%	18.29	18.17	-0.12
1.3	Na'an	112.1	112.6	112.5	-0.1%	0.4%	10.54	10.53	-0.01
1.4	Ikan ho hahan tasi	122.2	122.2	122.2	0.0%	0.0%	3.85	3.85	0.00
1.5	Susu ben, keju ho manu tolu	119.8	105.5	105.5	0.0%	-11.9%	1.88	1.88	0.00
1.6	Bokurho mina	132.3	121.1	121.1	0.0%	-8.5%	4.03	4.03	0.00
1.7	Frutas	98.7	88.5	87.8	-0.8%	-11.0%	1.12	1.11	-0.01
1.8	Vejetais	108.7	110.8	110.8	0.0%	1.9%	11.84	11.84	0.00
1.9	Masin midar, marmelada, bani ben, chocolate	120.8	120.3	120.3	0.0%	-0.4%	5.59	5.59	0.00
1.10	Produtu Aihan	92.3	104.1	104.1	0.0%	12.8%	4.13	4.13	0.00
1.11	Café, xá, no cacao	110.0	110.0	110.0	0.0%	0.0%	2.78	2.78	0.00
1.12	Be, Bebidas, jus ai fuan no modo tahan	118.2	109.5	109.5	0.0%	-7.4%	0.92	0.92	0.00
1.13	Hahan preparadu	100.0	100.0	100.0	0.0%	0.0%	0.05	0.05	0.00
2	ALKOHOL HO TABAKU	132.5	136.5	136.5	0.0%	3.0%	9.90	9.90	0.00
2.1	Alkohol	117.0	128.1	128.1	0.0%	9.5%	3.39	3.39	0.00
2.2	Tabaku	141.3	141.3	141.3	0.0%	0.0%	6.52	6.52	0.00
3	HATAIS HO SAPATU	99.7	100.6	100.6	0.0%	0.9%	14.28	14.27	0.00
3.1	Roupa ba mane	110.4	110.4	110.4	0.0%	0.0%	3.23	3.23	0.00
3.2	Roupa ba feto	100.0	100.0	100.0	0.0%	0.0%	2.52	2.52	0.00
3.3	Roupa ba labarik ho bebe	99.1	102.5	102.5	0.0%	3.4%	3.82	3.82	0.00
3.4	Sapatu ho asesories ropa	93.8	93.8	93.8	0.0%	0.0%	4.71	4.71	0.00
4	UMA	107.3	107.2	107.2	0.0%	-0.1%	2.79	2.79	0.00
4.2	Manutensaun no hadiak hela fatin	103.5	103.4	103.4	0.0%	-0.1%	0.90	0.90	0.00
4.3	Be, eletrisidade, gas no sira seluk	109.2	109.2	109.2	0.0%	0.0%	1.89	1.89	0.00
MANUTENSAUN ROTINA BA EQUIPAMENTO NO MOBILARIO UMA LARAN									
5	UMA LARAN	97.3	92.0	92.0	0.0%	-5.4%	8.09	8.09	0.00
5.1	Mobiliario no tekstil uma laran	93.3	94.2	94.2	0.0%	1.0%	0.12	0.12	0.00
5.2	Manutensaun uma laran	103.4	101.3	101.3	0.0%	-2.0%	0.29	0.29	0.00
5.3	Sasan no kolen ba equipamento uma laran	97.2	91.7	91.7	0.0%	-5.7%	7.68	7.68	0.00
6	SAUDE	113.2	113.2	113.2	0.0%	0.0%	1.41	1.41	0.00
6.1	Produtu medicamentos no material equipamentos	113.9	113.9	113.9	0.0%	0.0%	1.23	1.23	0.00
6.2	Doutor no atendimento husi hospital	108.9	108.9	108.9	0.0%	0.0%	0.17	0.17	0.00
7	TRANSPORTASAUN	107.0	108.0	107.5	-0.5%	0.5%	1.65	1.64	-0.01
7.1	Sosa kareta	100.0	100.0	100.0	0.0%	0.0%	0.01	0.01	0.00
7.2	Utiliza equipamento transportasaun pessoal	125.1	128.8	127.0	-1.4%	1.5%	0.55	0.54	-0.01
7.3	Hadia transportasaun	100.0	100.0	100.0	0.0%	0.0%	1.09	1.09	0.00
8	KOMUNIKASAUN	99.6	100.0	100.0	0.0%	0.4%	4.74	4.74	0.00
8.1	Hadia equipamento telekomunikasaun	99.6	100.0	100.0	0.0%	0.4%	4.74	4.74	0.00
9	REKREASAUN NO KULTURA	101.0	101.0	101.0	0.0%	0.0%	1.79	1.79	0.00
9.1	Equipamentos audio visual, fotografian no produs informasaun	72.0	72.0	72.0	0.0%	0.0%	0.02	0.02	0.00
9.2	Sasan rekreasaun no kultura	102.5	102.5	102.5	0.0%	0.0%	0.99	0.99	0.00
9.3	Jornal, livru no equipamento hakerek	100.0	100.0	100.0	0.0%	0.0%	0.78	0.78	0.00
10	EDUKASAUN	100.0	100.0	100.0	0.0%	0.0%	1.08	1.08	0.00
10	Edukasaun	100.0	100.0	100.0	0.0%	0.0%	1.08	1.08	0.00



TABELA 2. OTHER - analytical index

Fevereiro 2024		Numeru Indise			Mudansa Percentajen		Pontu Kontribuisaun		Mudansa Pontu
		Fev	Jan	Fev	Fev-24	Fev-24	Jan	Fev	Fev-24
		2023	2024	2024	to Jan-24	to Feb-23	2024	2024	to Jan-24
Grupu Gastu									
a	GRUPU HOTU	122.6	129.5	129.6	0.1%	5.7%	129.5	129.6	0.10
1	HAHAN NO BEBIDAS	124.9	137.9	138.2	0.2%	10.6%	77.09	77.22	0.13
1.1	Pao ho hahan husi Fós	115.0	113.6	113.3	-0.3%	-1.5%	2.37	2.37	-0.01
1.2	Fós	124.0	164.0	163.9	-0.1%	32.2%	26.09	26.07	-0.01
1.3	Na'an	109.4	109.0	109.2	0.2%	-0.2%	8.04	8.05	0.01
1.4	Ikan ho hahan tasi	103.5	104.9	104.9	0.0%	1.4%	2.68	2.68	0.00
1.5	Susu ben, keju ho manu tolu	127.1	127.2	127.4	0.2%	0.2%	2.27	2.27	0.00
1.6	Bokurho mina	183.9	170.1	169.4	-0.4%	-7.9%	7.72	7.69	-0.03
1.7	Frutas	117.8	110.8	108.2	-2.3%	-8.1%	0.83	0.81	-0.02
1.8	Vejetais	140.3	150.2	152.4	1.5%	8.6%	12.67	12.85	0.18
1.9	Masin midar, marmelada, bani ben, chocolate	114.1	125.4	125.4	0.0%	9.9%	6.98	6.98	0.00
1.10	Produtu Aihan	105.1	106.3	106.3	0.0%	1.1%	4.23	4.23	0.00
1.11	Café, xá, no cacao	107.4	106.4	106.4	0.0%	-0.9%	2.18	2.18	0.00
1.12	Be, Bebidas, jus ai fuan no modo tahan	111.3	123.7	126.0	1.9%	13.2%	0.77	0.79	0.01
1.13	Hahan preparadu	100.0	100.0	100.0	0.0%	0.0%	0.26	0.26	0.00
2	ALKOHOL HO TABAKU	181.6	183.1	183.2	0.1%	0.9%	15.05	15.05	0.00
2.1	Alkohol	138.0	143.1	143.9	0.6%	4.3%	2.09	2.10	0.01
2.2	Tabaku	191.0	191.8	191.7	-0.1%	0.4%	12.96	12.94	-0.01
3	HATAIS HO SAPATU	103.3	103.0	102.9	-0.1%	-0.4%	6.30	6.30	0.00
3.1	Roupa ba mane	101.4	100.2	100.1	-0.1%	-1.3%	1.15	1.15	0.00
3.2	Roupa ba fetu	101.3	104.5	104.5	0.0%	3.2%	1.11	1.11	0.00
3.3	Roupa ba labarik ho bebe	109.9	109.3	109.3	0.0%	-0.5%	2.21	2.21	0.00
3.4	Sapatu ho asesories ropa	98.4	96.9	96.8	-0.1%	-1.6%	1.83	1.83	0.00
4	UMA	104.1	102.5	102.5	0.0%	-1.5%	6.35	6.35	0.00
4.1	Aluga uma	96.5	100.0	100.0	0.0%	3.6%	0.00	0.00	0.00
4.2	Manutensaun no hadiak hela fatin	107.4	106.9	107.2	0.3%	-0.2%	1.79	1.80	0.01
4.3	Be, eletrisidade, gas no sira seluk	102.9	100.8	100.8	0.0%	-2.0%	4.55	4.55	0.00
5	MANUTENSAUN RUTINA BA EQUIPAMENTO NO MOBILARIO UMA LARAN	102.9	99.7	99.5	-0.2%	-3.3%	8.17	8.15	-0.02
5.1	Mobiliario no tekstil uma laran	101.5	102.1	101.5	-0.6%	0.0%	1.10	1.09	-0.01
5.2	Manutensaun uma laran	106.4	96.9	95.7	-1.2%	-10.1%	1.20	1.18	-0.01
5.3	Sasan no kolen ba equipamento uma laran	102.5	99.8	99.9	0.1%	-2.5%	5.88	5.88	0.00
6	SAUDE	100.2	100.2	100.2	0.0%	0.0%	1.86	1.86	0.00
6.1	Produtu medicamentos no material equipamentos	100.2	100.2	100.2	0.0%	0.0%	1.63	1.62	0.00
6.2	Doutor no atendimento husi hospital	100.3	100.3	100.3	0.0%	0.0%	0.24	0.24	0.00
7	TRANSPORTASAUN	120.6	118.0	117.7	-0.3%	-2.4%	5.53	5.52	-0.01
7.1	Sosa karetu	118.6	107.1	107.1	0.0%	-9.7%	1.13	1.13	0.00
7.2	Utiliza equipamento transportasaun pessoal	123.3	123.8	123.0	-0.6%	-0.2%	2.04	2.03	-0.01
7.3	Hadia transportasaun	119.4	119.0	119.0	0.0%	-0.3%	2.36	2.36	0.00
8	KOMUNIKASAUN	100.4	100.1	100.1	0.0%	-0.3%	4.68	4.68	0.00
8.1	Hadia equipamento telekomunikaun	100.4	100.1	100.1	0.0%	-0.3%	4.68	4.68	0.00
9	REKREASAUN NO KULTURA	100.7	102.2	102.2	0.0%	1.5%	3.32	3.32	0.00
9.1	Equipamentos audio visual, fotografian no produs informasaun	96.4	97.1	97.1	0.0%	0.7%	0.27	0.27	0.00
9.2	Sasan rekreasaun no kultura	100.5	100.5	100.5	0.0%	0.0%	1.97	1.97	0.00
9.3	Jornal, livru no equipamento hakerek	102.2	106.6	106.6	0.0%	4.3%	1.09	1.09	0.00
10	EDUKASAUN	123.4	124.4	124.4	0.0%	0.8%	1.14	1.14	0.00
10	Edukasaun	123.4	124.4	124.4	0.0%	0.8%	1.14	1.14	0.00



NOTAS ESPLIKASAUN

NOTA BA UZA NAIN

IPK serie 3 inkorpora rezultadu husi revisaun bo'ot no troka todan iha IPK Timor Leste. Todan IPK serie 3 baseia ba rezultadu *Living Standard Survey (LSS) 2014-15*. Iha informasaun rua ne'ebe publika kona-ba revisaun. Primeru, *Review of Timor Leste Consumer Price Index (CPI): Series 3 2018: Issues for Consideration* publika iha 2017, ne'ebe husu no buka hatene opiniaun uza nain sira kona-ba revisaun no todan foun ne'ebe sei aplika iha serie 3. Segundu, *Technical Note of Timor Leste Consumer Price Index Series 3 Reweight* publika iha Outubro 2018, kona-ba metodolojia no rezultadu IPK serie 3. Informasaun rua ne'e bele hare iha portál INE-TL www.inetl-ip.gov.tl

DESKRISAUN BADAQ BA IPK

IPK sukat mudansa presu kada periodu husi raga produktu no servisu ne'ebe sura proporsaun despeza husi rezidente uma kain. Raga ida ne'e kobre produktu no servisu oin-oin, hanesan iha grupu 10 tuir mai ne'e: 1. Hahan no Bebidas laos Alkohol; 2. Alkohol no Tabaku; 3. Hatais no Sapatu; 4. Uma; 5. Manutensaun Rutina no Ekipamentu Uma; 6. Saude; 7. Transporte; 8. Komunikaun; 9. Rekreaun no kultura; 10. Edukasaun.

Informasaun klaru liu tan kona-ba IPK Timor Leste no matadalan ba IPK Timor Leste bele hare iha portál INE-TL iha www.inetl-ip.gov.tl

PUBLIKASAUN INDISE

Indise Presu Konsumidór produs husi Instituto Nacional de Estatística, I.P. kada fulan.

Indise primeru ne'ebe publika husi INE-TL maka Indise Presu Konsumedór Timor Leste. Dadus ba indise nasional aprezena iha gráfico no tabela 1 publikasaun.

INE-TL mos publika indise tolu seluk ne'ebe ho objetivu analiza nian - primeiru, reprezeta mudansa presu ba munisipiú Dili, segundu, Reprezenta mudansa presu ba munisipiú Baucau no terseiru reprezenta mudansa presu ne'ebe kobre munisipiú seluk iha Timor Leste (hanaran "OTHER). Iha serie indise IPK ne'e kompila uza raga produktu ne'ebe aprezena iha tabela 2, 3, no 4 iha publikasaun.

REKOILA PRESU BA IPK

Presu ba produktu no servisu maioria liu kolekta husi staf ou ekipa IPK ne'ebe servisu iha eskritóriu nasional iha Dili. Presu ba produktu husi munisipiú kolekta husi staf sira ne'ebe servisu iha eskritóriu estatística iha kada munisipiú, amostra presu balun kolekta husi survei espesiál.

MODELU TODAN

Grupú bot 10 iha IPK serie 3 fahe ba grupú gastu 35 no kada grupú gastu iha todan ketak. Bainhira halo kalkulasiun indise, uza todan iha kada grupú gastu ne'e halo kombinasaun ba mudansa presu iha kada grupú gastu. Modelu todan iha IPK serie 3 mos bele haree iha portál INE-TL iha www.inetl-ip.gov.tl



ANÁLIZA BA MUDANSA PRESU

Mudansa indise husi periodu ba periode bele espresa hanesan mudansa pontu indise ou bele mos mudansa persentajen. Mudansa persentajen kalkula uza movimentu númeru indise rua ne'ebe diferente:

Mudansa entre fulan hanesan kada tinan tutuir malu

Mudansa entre fulan tutuir malu

$$\text{Mudansa persentajen (\%)} = \frac{\text{indise}_t - \text{indise}_{t-1}}{\text{indise}_{t-1}} \times 100\%$$

Ezemplu tuir mai esplika metodu kalkula mudansa pontu indise ou mudansa persentajen entre periode rua:

Indise fulan Janeiru 2013 101,4

Indise fulan janeiru 2012 90,7

$$\text{Mudansa persentajen (\%)} = \frac{101,4 - 90,7}{90,7} \times 100\%$$

$$\text{Mudansa persentajen (\%)} = \frac{10,7}{90,7} \times 100\%$$

$$\text{Mudansa persentajen (\%)} = 0,11797133 \times 100\%$$

$$\text{Mudansa persentajen (\%)} = 11,8\%$$

Kada tabela iha publikasaun fornese detailu konaba análize movimentu iha IPK no inklui mos informasaun ba mudansa iha grupu IPK no mos grupu gastu iha grupu IPK nia laran. Iha tabela ne'e mos hatudu kontribuisaun husi kada grupu gastu ba total IPK. Ezemplu, IPK Timor Leste 2013 hetan kontribuisaun 17,85 pontu indise husi grupu fôs no total grupu hotu iha IPK hetan númeru IPK 101,3 iha Janeiru 2013. Iha koluna final hatudu kontribuisaun ba mudansa pontu indise grupu hotu inklui grupu gastu.

RONDE (ROUNDING)

Númeru indise ne'ebe publika babain ronde ba decimal ida, no mudansa persentajen (ronde ba decimal ida) kalkula husi númeru indise ne'ebe ronde tiha ona. Hanesan mos, ida ne'e posivel bele rezutla mudansa persentajen ba nivel grupu IPK diferente ho mudansa persentajen ba nivel indise komponente (ezemplu, mudansa persentajen total grupu hotu iha IPK diferente ho mudansa persentajen ba grupu gastu ne'ebe iha grupu IPK nia laran)

REVIZAUN

Revizaun ba indise orijinal IPK bele halo bainhira iha sirkunstánsia exesional, hanesan atu halo koresaun ba erru signifikante ida. Periodu referénsia indise (ezemplu, periodu ne'ebe estabelese valor indise 100.0 iha tinan Agosto 2018) sei muda periodikamente.

DADUS DISPONIVEL

Hanesan estatistik ou dadus ne'ebe hatudu iha publikasaun ida ne'e, iha dadus ne'ebe detailu liu tan (iha formatu tempu oin-oin/ in *time seires format*) disponivel iha portal INE-TL .



INSTITUTO NACIONAL DE ESTATÍSTICA
TIMOR-LESTE, I.P.

Instituto Nacional de Estatística, I.P.
Rua de Caicoli, Po Box 10
Dili, Timor-Leste
www.inetl-ip.gov.tl