



CONSUMER PRICE INDEX TIMOR-LESTE FEBRUARY 2024

CPI SERIES 3 EDITION

Release Date:
March 19st, 2024

Next Release:
April 16st, 2024



INSTITUTO NACIONAL DE ESTATÍSTICA
TIMOR-LESTE, I.P.



Ministerio das Finanças



Title

Consumer Price Index Timor-Leste,
February 2024

Editor

Jemi Natalino Rosario
Rosantina da Costa Cruz Sarmiento
Eduardo M. Ximenes
Silvino Lopes

National Institute of Statistics, I.P.
Rua de Caicoli, PO Box 10
Dili, Timor-Leste

President of National Institute of Statistics, I.P.

[Elias dos Santos Ferreira, L.Ec, MM](#)

Design and Composition
Timor Leste National Institute of Statistics, I.P.



www.inetl-ip.gov.tl

Cristino Gusmão
National Director of Economic Statistics
No. Telp: + 670 77230127
National Institute of Statistics
Rua de Caicoli, Dili, PO Box 10
Telephone: +670 3311348
email: cgusmao@mof.gov.tl



NOTES

CHANGES FROM THE EDITION CPI SERIES 3 None

FORTHCOMING ISSUES	ISSUE	RELEASED DATE
	March 2024	April 16 st , 2024
	April 2024	May 21 st , 2024

QUERIES

For Further information about these and other Related CPI. Contact :

1. Cristino Gusmão, Director da DNEES
Email: cgusmao@mof.gov.tl, No Telp : 77230127
2. Eduardo Martinho Ximenes, Head of Depart. Social and Economic
Email: emximenes@mof.gov.tl, No Telp. 77339216
3. Jemi Natalino Rosario
Email: jnrosario@mof.gov.tl, No Telp. 77543554
4. Rosantina da Costa Cruz Sarmentu
Email: rcsarmento@mof.gov.tl, No Telf. 77085481



Elias dos Santos Ferreira, L.Ec, MM
President, Timor-Leste National Institute of Statistics



Contents

1. Contents.....	1
2. February 2024 Monthly Key Figures.....	2
3. February 2024 Key Points.....	3
4. What are the main movements?	5
5. Tradable & Non-Tradable CPI.....	6
6. Table 1 : Timor-Leste Analytical Index February 2024.....	7
7. Table 2 : Dili Analytical Index February 2024.....	8
8. Table 3 : Baucau Analytical Index February 2024.....	9
9. Table 4 : OTHER Analytical Index February 2024.....	10
10. Explanatory Notes.....	11

**CONSUMER PRICE INDEX
TIMOR - LESTE, FEBRUARY 2024**


INTRODUCTION TO THE SERIES 3 CPI

All published indexes from September 2018 have been rereferenced to Aug 2018 = 100.0. Time series data, details of new CPI weights, and other information relating to changes to the Timor-Leste CPI are available on the National Institute of Statistics (NIS) website, see www.inetl-ip.gov.tl

February 2024 Key Figures

(a) For March, June, and September 2013, annual percentage changes are calculated on a quarterly basis. For December 2013 onwards annual changes will be calculated on movements between corresponding months of consecutive years.

Timor-Leste Consumer Price Index	Monthly	Annual (a)
	Feb - 2024 to Jan-2024	Feb—2024 to Feb—2023
	% change	% change
All groups CPI	0.2%	3.9%
Tradeable CPI	0.0%	5.1%
Non-Tradeable CPI	0.5%	0.8%
1. Food and non-alcoholic beverages	0.2%	7.4%
2. Alcohol and tobacco	-0.1%	2.4%
3. Clothing and footwear	0.0%	0.0%
4. Housing	0.1%	-1.5%
5. Furnishings, household equipment and routine household maintenance	-0.1%	-3.6%
6. Health	0.0%	0.0%
7. Transport	-0.1%	-3.5%
8. Communication	0.0%	-0.2%
9. Recreation and culture	0.0%	1.5%
10. Education	0.0%	2.0%



February 2024 Key Points

- The All Groups CPI rise +0.2% in February 2024, compared to a fall -0.4% in January 2024.
- The significant fall of the Food and Non Alcoholic Beverages (+0.2%), and Housing (+0.1%). The largest offsetting movement came from Transports (-0.1%), Alcohol and Tobacco (-0.1%) and Furnishing, Household Equipment and Routine Household Maintenance (-0.1%) groups.
- The 12-month Tradeable CPI rate stood at +5.1%, with the Non-Tradeable rate a rise +0.8%

A brief description of Consumer Price Inflation

Consumer price inflation is the rate at which the prices of goods and services bought by households rise or fall. Consumer price inflation is estimated by using price indices. A way to understand a price index is to think of a very large shopping basket containing all the goods and services bought by households. The price index estimates changes to the total cost of this basket.

A price index can be used to measure inflation in a number of ways. The most common is to look at how the index has changed over a year. The change is calculated by comparing the price index for the latest month with the same month a year ago, which is known as the 12-month inflation rate. This bulletin measures inflation to February 2024, so the 12-month rate measures changes in prices between February 2024 and February 2023.

Latest figure and long-term trend

The CPI 12-month rate between February 2024 and February 2023 stood at +3.9%, meaning that a basket of goods and services that cost \$100.00 in February 2023 would have cost \$100.39 in February 2024.

The All Groups CPI (+3.9%) through the year ending February 2024. The largest driver of the rise in the annual came from Food and Non-Alcoholic Beverages (+7.4%) group, which was driven by Rice (+27.9%), Vegetables (+8.5%), Sugar, Jam, Honey, Chocolate and Confectionery (+2.8%), Fish and Seafood (+1.4%), Mineral Waters, Soft Drinks, Fruit and Vegetable Juices (+7.5%) and Food Products (+2.9%) subgroups. The largest offsetting movement came from Oil and Fats (-10.1%), Milk, Cheese and Eggs (-1.0%), Meats (-0.2%), Fruits (-5.1%), Coffee, Tea, and Cocoa (-1.9%) and Bread and Cereals (-1.2%) sub groups. The Alcohol and Tobacco (+2.4%), Education (+2.0%), and Recreation and Culture (+1.5%) groups. The largest offsetting movement came from Transports (-3.5%), Furnishing, Household Equipment and Routine Household Maintenance (-3.6%), Housing (-1.5%), and Communication (-0.2%) groups.

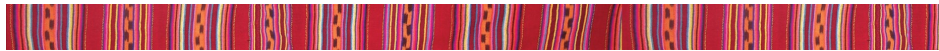
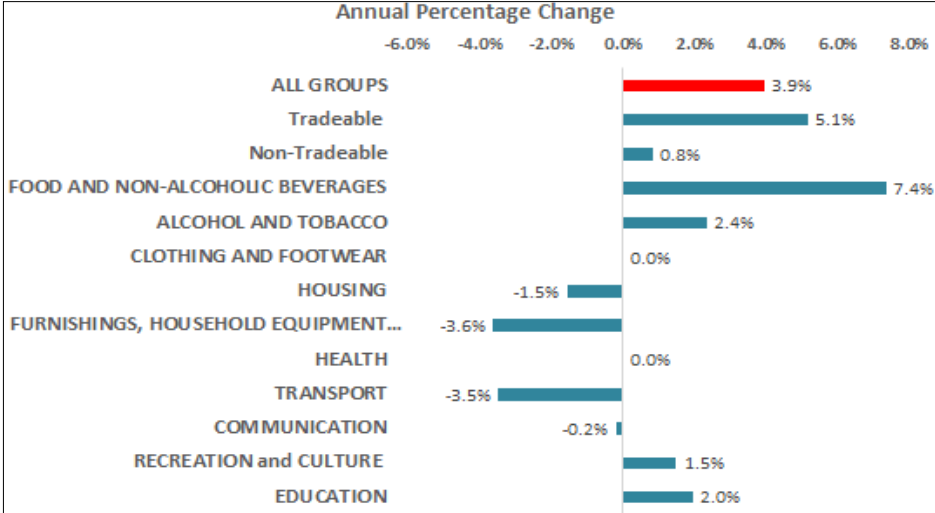


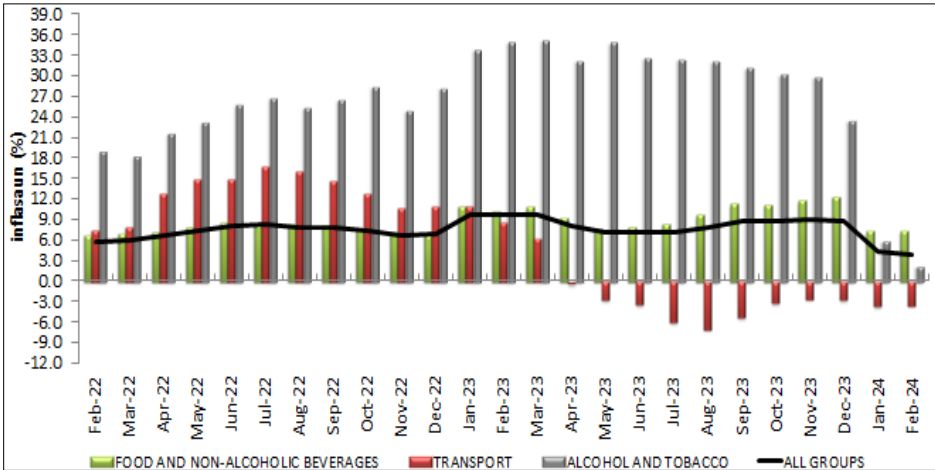
Figure A: Contributions to the CPI 12-month rate, February 2024



Source: National Institute of Statistics, Ministry of Finance

Notes: Individual contributions may not sum to the total due to rounding.

Figure B: CPI 12-month inflation rate with contributions for the period February 2024—February 2022



Source: National Institute of Statistics, Ministry of Finance

The sustained period of deflation as seen during the period February 2024 to February 2022 was largely driven by the Food and non-alcoholic beverage, Transport and Alcohol and Tobacco groups. The rebound in the 12-month CPI rate is driven by a rise in food and non-alcoholic beverage prices.

*Core CPI is equal to All Groups CPI less Food and non-alcoholic beverages and Transport groups

Consumer Price Index (CPI): What are the main movements?

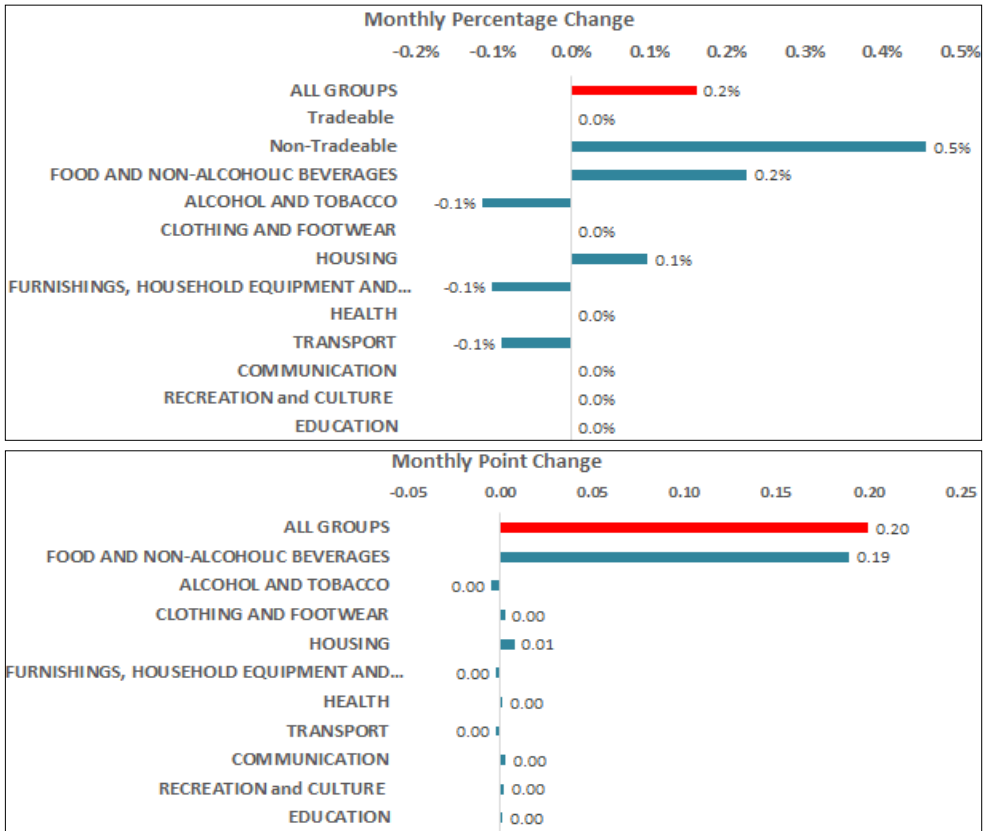
The largest upward contributions to the change in the one month CPI rate (+0.2%) between February 2024 and January 2024, came from:

- **Food and non-alcoholic beverages (+0.2%):** which was significantly driven by Vegetables (+0.9%), Mineral Waters, Soft Drinks, Fruit and Vegetable Juices (+2.3%), Rice (+0.1%), Milk, Cheese and Eggs (+0.3%), and Meats (+0.1%) sub groups. The largest offsetting movement came from Oil and Fats (-0.3%), Fruits (-1.0%) and Bread and Cereals (-0.4%) sub groups.
- **Housing (+0.1%):** was driven by Maintenance and Repair of the Dwelling (+0.3%)

In the other part, the largest offsetting movement came from:

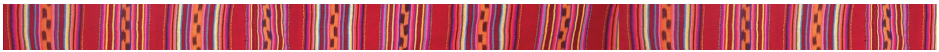
- **Transports (-0.1%):** was driven by Operation of Personal Transport Equipment (-0.3%).
- **Alcohol and Tobacco (-0.1%):** was driven by Tobacco (-0.2%) sub group.
- **Furnishing, Household Equipment and Routine Household Maintenance (-0.1):** was driven by Household Appliances (-1.1%)

Figure C: Contributions to the change in the CPI monthly rate, February 2024 to January 2024



Source: National Institute of Statistics, Ministry of Finance

Notes: Individual contributions may not sum to the total due to rounding.

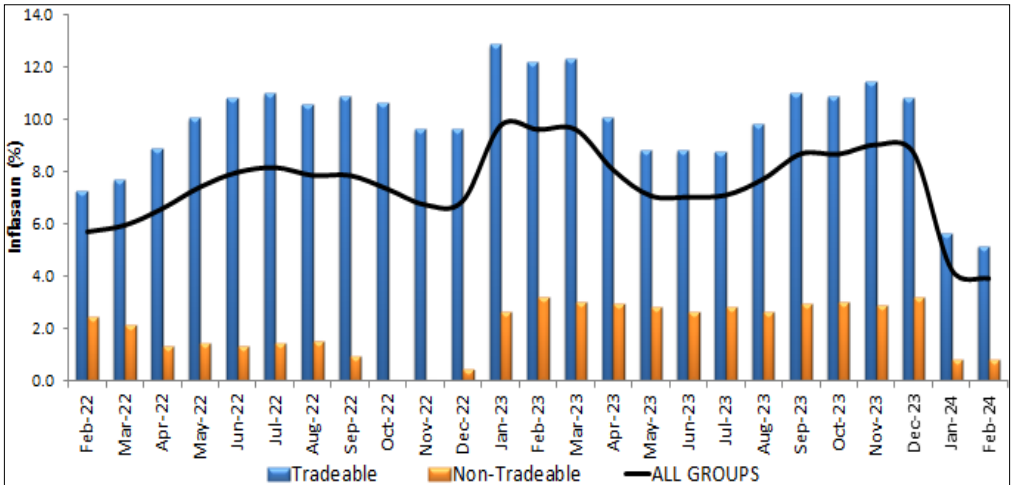


Tradeable & Non-Tradable CPI

The CPI Tradable and Non-tradable series, measure the contribution of domestic (non-tradable) and imported (tradable) inflation to overall household inflation. Identifying the source of household inflation supports the understanding of the different drivers of inflation, as well as informing monetary and fiscal policy decisions .

The definition of a tradeable good or service is one that is exposed to a high level of international competition, and its price is influenced by such competition. Similarly, a non-tradeable good or service is exposed to low level of international competition, and its price is considered not to be affected by such competition. Inflation for non -tradable items should provide a relatively good sense of the extent to which demand exceeds (or falls short) of supply in the domestic economy. Tradable items are much more exposed to international competition, which includes many imported manufactured goods such as televisions and computers, as well as many food items. The prices of these items should be less influenced by conditions in the Timor-Leste economy, and more affected by prices set on world markets and fluctuations in the exchange rate.

Figure E: Contribution of Tradeable CPI and Non-Tradable CPI to 12-month Inflation rate, Feb-24 to Feb-22



Source: National Institute of Statistics, Ministry of Finance

Notes: Individual contributions may not sum to the total due to rounding.

In reference to Figure E, the positive 12-month inflation as seen over the period February 2022 to February 2024 has been driven by international factors as indicated by the tradeable CPI rate. The 12-month CPI rate is currently at +3.9%, which was driven by the Tradeable (+5.1%) and Non-Tradable (+0.8%) showed increased. The analytical series are indicating that the current inflation rate is being driven by international price pressures and fluctuations in exchange rates.

TABLE 1. TIMOR-LESTE CPI

February 2024		INDEX NUMBERS			PERCENTAGE CHANGE		POINTS CONTRIBUTION		POINTS CHANGE
		Feb	Jan	Feb	Feb-24	Feb-24	Jan	Feb	Feb-24
		2023	2024	2024	to	to	2024	2024	to
Groups and Expenditure Class					Jan-24	Feb-23			Jan-24
a	ALL GROUPS	119.7	124.2	124.4	0.2%	3.9%	124.2	124.4	0.20
c	TRADEABLE CPI	124.3	130.7	130.7	0.0%	5.1%			
d	NON-TRADEABLE CPI	109.1	109.5	110.0	0.5%	0.8%			
1	FOOD AND NON-ALCOHOLIC BEVERAGES	123.7	132.5	132.8	0.2%	7.4%	71.70	71.89	0.19
1.1	Bread and cereals (excluding rice)	112.5	111.6	111.1	-0.4%	-1.2%	2.57	2.57	-0.01
1.2	Rice	119.7	153.0	153.1	0.1%	27.9%	19.18	19.20	0.02
1.3	Meat	109.8	109.5	109.6	0.1%	-0.2%	8.86	8.87	0.01
1.4	Fish and seafood	104.1	105.6	105.6	0.0%	1.4%	3.31	3.31	0.00
1.5	Milk, cheese and eggs	125.0	123.4	123.8	0.3%	-1.0%	2.66	2.67	0.01
1.6	Oils and fats	168.6	152.0	151.6	-0.3%	-10.1%	5.61	5.60	-0.01
1.7	Fruit	110.7	106.1	105.0	-1.0%	-5.1%	1.38	1.37	-0.01
1.8	Vegetables	149.5	160.7	162.2	0.9%	8.5%	14.91	15.07	0.15
1.9	Sugar, jam, honey, chocolate and confectionery	120.2	123.6	123.6	0.0%	2.8%	5.55	5.55	0.00
1.1	Food products n.e.c.	105.1	108.2	108.2	0.0%	2.9%	4.19	4.20	0.00
1.1	Coffee, tea and cocoa	108.0	106.0	106.0	0.0%	-1.9%	1.92	1.92	0.00
1.1	Mineral waters, soft drinks, fruit and vegetable juices	109.8	115.4	118.0	2.3%	7.5%	0.90	0.92	0.02
2	Prepared food/meals	100.0	100.0	100.0	0.0%	0.0%	0.64	0.64	0.00
2	ALCOHOL AND TOBACCO	170.2	174.4	174.2	-0.1%	2.4%	12.21	12.20	0.00
2.1	Alcohol	130.6	137.2	137.7	0.4%	5.4%	2.26	2.27	0.01
2.2	Tobacco	182.4	185.9	185.5	-0.2%	1.7%	9.94	9.93	-0.01
3	CLOTHING AND FOOTWEAR	103.4	103.4	103.4	0.0%	0.0%	7.19	7.19	0.00
3.1	Garments for men	103.2	102.3	102.2	-0.1%	-1.0%	1.26	1.26	0.00
3.2	Garments for women	101.0	103.7	103.7	0.0%	2.7%	1.21	1.21	0.00
3.3	Garments for infants and children	110.0	110.1	110.1	0.0%	0.1%	2.63	2.64	0.00
3.4	Footwear and clothing accessories	97.5	96.6	96.6	0.0%	-0.9%	2.09	2.09	0.00
4	HOUSING	103.3	101.6	101.7	0.1%	-1.5%	6.39	6.40	0.01
4.1	Actual rentals paid by tenants	96.5	100.0	100.0	0.0%	3.6%	0.07	0.07	0.00
4.2	Maintenance and repair of the dwelling	107.4	106.9	107.2	0.3%	-0.2%	1.11	1.11	0.00
4.3	Water, electricity, gas and other fuels	102.6	100.6	100.6	0.0%	-1.9%	5.21	5.21	0.00
5	FURNISHINGS, HOUSEHOLD EQUIPMENT AND ROUTINE HOUSEHOLD MAINTENANCE	102.2	98.6	98.5	-0.1%	-3.6%	7.74	7.74	0.00
5.1	Household furniture and textiles	101.0	101.2	100.7	-0.5%	-0.3%	1.07	1.07	0.00
5.2	Household appliances	106.3	96.9	95.8	-1.1%	-9.9%	1.02	1.00	-0.01
5.3	Goods and services for routine household maintenance	101.6	98.5	98.6	0.1%	-3.0%	5.65	5.67	0.01
6	HEALTH	101.0	101.0	101.0	0.0%	0.0%	1.95	1.95	0.00
6.1	Medical products, appliances and equipment	101.0	101.0	101.0	0.0%	0.0%	1.71	1.71	0.00
6.2	Medical and Hospital services	100.7	100.7	100.7	0.0%	0.0%	0.25	0.25	0.00
7	TRANSPORT	115.1	111.2	111.1	-0.1%	-3.5%	6.47	6.47	0.00
7.1	Purchase of vehicles	119.1	108.2	108.2	0.0%	-9.2%	1.27	1.27	0.00
7.2	Operation of personal transport equipment	119.1	115.2	114.9	-0.3%	-3.5%	2.74	2.74	-0.01
7.3	Transport services	108.8	108.6	108.6	0.0%	-0.2%	2.45	2.45	0.00
8	COMMUNICATION	100.3	100.1	100.1	0.0%	-0.2%	4.76	4.77	0.00
8.1	Telecommunication equipment and services	100.3	100.1	100.1	0.0%	-0.2%	4.76	4.77	0.00
9	RECREATION and CULTURE	100.8	102.3	102.3	0.0%	1.5%	3.55	3.56	0.00
9.1	Audio-visual, photographic and information processing equipment	96.3	96.9	96.9	0.0%	0.6%	0.33	0.33	0.00
9.2	Recreational items and cultural services	100.9	100.9	100.9	0.0%	0.0%	1.89	1.90	0.00
9.3	Newspapers, books and stationery	102.0	105.8	105.8	0.0%	3.7%	1.33	1.34	0.00
10	EDUCATION	122.5	124.9	124.9	0.0%	2.0%	2.23	2.24	0.00
10	Education	122.5	124.9	124.9	0.0%	2.0%	2.23	2.24	0.00

TABLE 2. DILI - analytical index

January 2024		INDEX NUMBERS			PERCENTAGE CHANGE		POINTS CONTRIBUTION		POINTS CHANGE
		Jan 2023	Dec 2023	Jan 2024	Jan-24 to Dec-23	Jan-24 to Jan-23	Dec 2023	Jan 2024	Jan-24 to Dec-23
Groups and Expenditure Class									
a	ALL GROUPS	119.1	120.1	120.3	0.2%	1.0%	120.1	120.3	0.20
1	FOOD AND NON-ALCOHOLIC BEVERAGES	126.3	128.7	129.1	0.3%	2.2%	65.70	65.92	0.22
1.1	Bread and cereals (excluding rice)	109.6	108.8	108.7	-0.1%	-0.8%	2.92	2.92	0.00
1.2	Rice	120.2	130.0	130.7	0.5%	8.7%	10.22	10.29	0.06
1.3	Meat	109.5	109.1	109.0	-0.1%	-0.5%	9.53	9.53	-0.01
1.4	Fish and seafood	100.9	102.7	102.7	0.0%	1.8%	4.00	4.00	0.00
1.5	Milk, cheese and eggs	124.0	123.2	123.6	0.3%	-0.3%	3.38	3.39	0.01
1.6	Oils and fats	145.2	120.6	120.6	0.0%	-16.9%	3.20	3.20	0.00
1.7	Fruit	109.2	106.5	106.2	-0.3%	-2.7%	2.18	2.18	-0.01
1.8	Vegetables	170.7	185.8	187.0	0.6%	9.5%	18.71	18.84	0.13
1.9	Sugar, jam, honey, chocolate and confectionery	134.6	120.0	120.0	0.0%	-10.8%	3.64	3.64	0.00
1.10	Food products n.e.c.	108.6	112.0	112.0	0.0%	3.1%	4.17	4.17	0.00
1.11	Coffee, tea and cocoa	108.4	103.2	103.2	0.0%	-4.8%	1.36	1.36	0.00
1.12	Mineral waters, soft drinks, fruit and vegetable juices	106.8	109.6	113.1	3.2%	5.9%	1.07	1.11	0.03
1.13	Prepared food/meals	100.0	100.0	100.0	0.0%	0.0%	1.30	1.30	0.00
2	ALCOHOL AND TOBACCO	159.6	169.5	168.8	-0.4%	5.8%	9.01	8.98	-0.03
2.1	Alcohol	127.0	133.6	133.9	0.2%	5.4%	2.20	2.21	0.01
2.2	Tobacco	174.2	185.7	184.5	-0.6%	5.9%	6.81	6.77	-0.04
3	CLOTHING AND FOOTWEAR	105.8	105.7	105.6	-0.1%	-0.2%	6.58	6.58	0.00
3.1	Garments for men	100.5	99.1	99.0	-0.1%	-1.5%	0.90	0.90	0.00
3.2	Garments for women	101.2	104.8	104.8	0.0%	3.6%	1.00	1.00	0.00
3.3	Garments for infants and children	114.2	113.7	113.7	0.0%	-0.4%	2.90	2.90	0.00
3.4	Footwear and clothing accessories	99.1	98.2	98.1	-0.1%	-1.0%	1.79	1.79	0.00
4	HOUSING	101.9	100.1	100.1	0.0%	-1.8%	7.36	7.36	0.00
4.1	Actual rentals paid by tenants	96.5	100.0	100.0	0.0%	3.6%	0.17	0.17	0.00
4.2	Maintenance and repair of the dwelling	110.7	110.1	111.0	0.8%	0.3%	0.25	0.26	0.00
4.3	Water, electricity, gas and other fuels	101.8	99.7	99.7	0.0%	-2.1%	6.93	6.93	0.00
5	FURNISHINGS, HOUSEHOLD EQUIPMENT AND ROUTINE HOUSEHOLD MAINTENANCE	102.5	99.1	99.1	0.0%	-3.3%	7.09	7.10	0.00
5.1	Household furniture and textiles	100.7	100.4	100.1	-0.3%	-0.6%	1.29	1.28	0.00
5.2	Household appliances	106.4	96.7	95.5	-1.2%	-10.2%	0.96	0.95	-0.01
5.3	Goods and services for routine household maintenance	102.2	99.2	99.5	0.3%	-2.6%	4.85	4.86	0.02
6	HEALTH	100.0	100.0	100.0	0.0%	0.0%	2.21	2.21	0.00
6.1	Medical products, appliances and equipment	100.0	100.0	100.0	0.0%	0.0%	1.93	1.94	0.00
6.2	Medical and Hospital services	100.0	100.0	100.0	0.0%	0.0%	0.28	0.28	0.00
7	TRANSPORT	111.4	106.3	106.3	0.0%	-4.6%	8.95	8.95	0.00
7.1	Purchase of vehicles	119.5	109.1	109.1	0.0%	-8.7%	1.78	1.78	0.00
7.2	Operation of personal transport equipment	116.5	110.0	110.0	0.0%	-5.6%	4.24	4.24	0.00
7.3	Transport services	100.0	100.0	100.0	0.0%	0.0%	2.93	2.93	0.00
8	COMMUNICATION	100.5	100.1	100.1	0.0%	-0.4%	4.88	4.89	0.00
8.1	Telecommunication equipment and services	100.5	100.1	100.1	0.0%	-0.4%	4.88	4.89	0.00
9	RECREATION and CULTURE	100.9	102.5	102.5	0.0%	1.6%	4.32	4.32	0.00
9.1	Audio-visual, photographic and information processing equipment	96.5	97.1	97.1	0.0%	0.6%	0.48	0.48	0.00
9.2	Recreational items and cultural services	101.1	101.1	101.1	0.0%	0.0%	2.03	2.03	0.00
9.3	Newspapers, books and stationery	102.0	105.7	105.7	0.0%	3.6%	1.81	1.81	0.00
10	EDUCATION	124.1	127.2	127.2	0.0%	2.5%	3.99	3.99	0.00
10	Education	124.1	127.2	127.2	0.0%	2.5%	3.99	3.99	0.00

TABLE 3. BAUCAU - analytical index

January 2024		INDEX NUMBERS			PERCENTAGE CHANGE		POINTS CONTRIBUTION		POINTS CHANGE
		Jan	Dec	Jan	Jan-24	Jan-24	Dec	Jan	Jan-24
		2023	2023	2024	to	to	2023	2024	to
Groups and Expenditure Class					Dec-23	Jan-23			Dec-23
a	ALL GROUPS	107.0	113.0	112.8	-0.2%	5.4%	113.0	112.8	-0.20
1	FOOD AND NON-ALCOHOLIC BEVERAGES	107.8	118.4	118.1	-0.3%	9.6%	67.28	67.09	-0.19
1.1	Bread and cereals (excluding rice)	114.8	114.8	112.4	-2.1%	-2.1%	2.27	2.22	-0.05
1.2	Rice	91.6	137.8	137.0	-0.6%	49.6%	18.29	18.17	-0.12
1.3	Meat	112.1	112.6	112.5	-0.1%	0.4%	10.54	10.53	-0.01
1.4	Fish and seafood	122.2	122.2	122.2	0.0%	0.0%	3.85	3.85	0.00
1.5	Milk, cheese and eggs	119.8	105.5	105.5	0.0%	-11.9%	1.88	1.88	0.00
1.6	Oils and fats	132.3	121.1	121.1	0.0%	-8.5%	4.03	4.03	0.00
1.7	Fruit	98.7	88.5	87.8	-0.8%	-11.0%	1.12	1.11	-0.01
1.8	Vegetables	108.7	110.8	110.8	0.0%	1.9%	11.84	11.84	0.00
1.9	Sugar, jam, honey, chocolate and confectionery	120.8	120.3	120.3	0.0%	-0.4%	5.59	5.59	0.00
1.10	Food products n.e.c.	92.3	104.1	104.1	0.0%	12.8%	4.13	4.13	0.00
1.11	Coffee, tea and cocoa	110.0	110.0	110.0	0.0%	0.0%	2.78	2.78	0.00
1.12	Mineral waters, soft drinks, fruit and vegetable juices	118.2	109.5	109.5	0.0%	-7.4%	0.92	0.92	0.00
1.13	Prepared food/meals	100.0	100.0	100.0	0.0%	0.0%	0.05	0.05	0.00
2	ALCOHOL AND TOBACCO	132.5	136.5	136.5	0.0%	3.0%	9.90	9.90	0.00
2.1	Alcohol	117.0	128.1	128.1	0.0%	9.5%	3.39	3.39	0.00
2.2	Tobacco	141.3	141.3	141.3	0.0%	0.0%	6.52	6.52	0.00
3	CLOTHING AND FOOTWEAR	99.7	100.6	100.6	0.0%	0.9%	14.28	14.27	0.00
3.1	Garments for men	110.4	110.4	110.4	0.0%	0.0%	3.23	3.23	0.00
3.2	Garments for women	100.0	100.0	100.0	0.0%	0.0%	2.52	2.52	0.00
3.3	Garments for infants and children	99.1	102.5	102.5	0.0%	3.4%	3.82	3.82	0.00
3.4	Footwear and clothing accessories	93.8	93.8	93.8	0.0%	0.0%	4.71	4.71	0.00
4	HOUSING	107.3	107.2	107.2	0.0%	-0.1%	2.79	2.79	0.00
4.2	Maintenance and repair of the dwelling	103.5	103.4	103.4	0.0%	-0.1%	0.90	0.90	0.00
4.3	Water, electricity, gas and other fuels	109.2	109.2	109.2	0.0%	0.0%	1.89	1.89	0.00
5	FURNISHINGS, HOUSEHOLD EQUIPMENT AND ROUTINE HOUSEHOLD MAINTENANCE	97.3	92.0	92.0	0.0%	-5.4%	8.09	8.09	0.00
5.1	Household furniture and textiles	93.3	94.2	94.2	0.0%	1.0%	0.12	0.12	0.00
5.2	Household appliances	103.4	101.3	101.3	0.0%	-2.0%	0.29	0.29	0.00
5.3	Goods and services for routine household maintenance	97.2	91.7	91.7	0.0%	-5.7%	7.68	7.68	0.00
6	HEALTH	113.2	113.2	113.2	0.0%	0.0%	1.41	1.41	0.00
6.1	Medical products, appliances and equipment	113.9	113.9	113.9	0.0%	0.0%	1.23	1.23	0.00
6.2	Medical and Hospital services	108.9	108.9	108.9	0.0%	0.0%	0.17	0.17	0.00
7	TRANSPORT	107.0	108.0	107.5	-0.5%	0.5%	1.65	1.64	-0.01
7.1	Purchase of vehicles	100.0	100.0	100.0	0.0%	0.0%	0.01	0.01	0.00
7.2	Operation of personal transport equipment	125.1	128.8	127.0	-1.4%	1.5%	0.55	0.54	-0.01
7.3	Transport services	100.0	100.0	100.0	0.0%	0.0%	1.09	1.09	0.00
8	COMMUNICATION	99.6	100.0	100.0	0.0%	0.4%	4.74	4.74	0.00
8.1	Telecommunication equipment and services	99.6	100.0	100.0	0.0%	0.4%	4.74	4.74	0.00
9	RECREATION and CULTURE	101.0	101.0	101.0	0.0%	0.0%	1.79	1.79	0.00
9.1	Audio-visual, photographic and information processing equipment	72.0	72.0	72.0	0.0%	0.0%	0.02	0.02	0.00
9.2	Recreational items and cultural services	102.5	102.5	102.5	0.0%	0.0%	0.99	0.99	0.00
9.3	Newspapers, books and stationery	100.0	100.0	100.0	0.0%	0.0%	0.78	0.78	0.00
10	EDUCATION	100.0	100.0	100.0	0.0%	0.0%	1.08	1.08	0.00
10	Education	100.0	100.0	100.0	0.0%	0.0%	1.08	1.08	0.00

TABLE 2. OTHERS - analytical index

January 2024		INDEX NUMBERS			PERCENTAGE CHANGE		POINTS CONTRIBUTION		POINTS CHANGE
		Jan 2023	Dec 2023	Jan 2024	Jan-24 to Dec-23	Jan-24 to Jan-23	Dec 2023	Jan 2024	Jan-24 to Dec-23
Groups and Expenditure Class									
a	ALL GROUPS	122.6	129.5	129.6	0.1%	5.7%	129.5	129.6	0.10
1	FOOD AND NON-ALCOHOLIC BEVERAGES	124.9	137.9	138.2	0.2%	10.6%	77.09	77.22	0.13
1.1	Bread and cereals (excluding rice)	115.0	113.6	113.3	-0.3%	-1.5%	2.37	2.37	-0.01
1.2	Rice	124.0	164.0	163.9	-0.1%	32.2%	26.09	26.07	-0.01
1.3	Meat	109.4	109.0	109.2	0.2%	-0.2%	8.04	8.05	0.01
1.4	Fish and seafood	103.5	104.9	104.9	0.0%	1.4%	2.68	2.68	0.00
1.5	Milk, cheese and eggs	127.1	127.2	127.4	0.2%	0.2%	2.27	2.27	0.00
1.6	Oils and fats	183.9	170.1	169.4	-0.4%	-7.9%	7.72	7.69	-0.03
1.7	Fruit	117.8	110.8	108.2	-2.3%	-8.1%	0.83	0.81	-0.02
1.8	Vegetables	140.3	150.2	152.4	1.5%	8.6%	12.67	12.85	0.18
1.9	Sugar, jam, honey, chocolate and confectionery	114.1	125.4	125.4	0.0%	9.9%	6.98	6.98	0.00
1.10	Food products n.e.c.	105.1	106.3	106.3	0.0%	1.1%	4.23	4.23	0.00
1.11	Coffee, tea and cocoa	107.4	106.4	106.4	0.0%	-0.9%	2.18	2.18	0.00
1.12	Mineral waters, soft drinks, fruit and vegetable juices	111.3	123.7	126.0	1.9%	13.2%	0.77	0.79	0.01
1.13	Prepared food/meals	100.0	100.0	100.0	0.0%	0.0%	0.26	0.26	0.00
2	ALCOHOL AND TOBACCO	181.6	183.1	183.2	0.1%	0.9%	15.05	15.05	0.00
2.1	Alcohol	138.0	143.1	143.9	0.6%	4.3%	2.09	2.10	0.01
2.2	Tobacco	191.0	191.8	191.7	-0.1%	0.4%	12.96	12.94	-0.01
3	CLOTHING AND FOOTWEAR	103.3	103.0	102.9	-0.1%	-0.4%	6.30	6.30	0.00
3.1	Garments for men	101.4	100.2	100.1	-0.1%	-1.3%	1.15	1.15	0.00
3.2	Garments for women	101.3	104.5	104.5	0.0%	3.2%	1.11	1.11	0.00
3.3	Garments for infants and children	109.9	109.3	109.3	0.0%	-0.5%	2.21	2.21	0.00
3.4	Footwear and clothing accessories	98.4	96.9	96.8	-0.1%	-1.6%	1.83	1.83	0.00
4	HOUSING	104.1	102.5	102.5	0.0%	-1.5%	6.35	6.35	0.00
4.1	Actual rentals paid by tenants	96.5	100.0	100.0	0.0%	3.6%	0.00	0.00	0.00
4.2	Maintenance and repair of the dwelling	107.4	106.9	107.2	0.3%	-0.2%	1.79	1.80	0.01
4.3	Water, electricity, gas and other fuels	102.9	100.8	100.8	0.0%	-2.0%	4.55	4.55	0.00
5	FURNISHINGS, HOUSEHOLD EQUIPMENT AND ROUTINE HOUSEHOLD MAINTENANCE	102.9	99.7	99.5	-0.2%	-3.3%	8.17	8.15	-0.02
5.1	Household furniture and textiles	101.5	102.1	101.5	-0.6%	0.0%	1.10	1.09	-0.01
5.2	Household appliances	106.4	96.9	95.7	-1.2%	-10.1%	1.20	1.18	-0.01
5.3	Goods and services for routine household maintenance	102.5	99.8	99.9	0.1%	-2.5%	5.88	5.88	0.00
6	HEALTH	100.2	100.2	100.2	0.0%	0.0%	1.86	1.86	0.00
6.1	Medical products, appliances and equipment	100.2	100.2	100.2	0.0%	0.0%	1.63	1.62	0.00
6.2	Medical and Hospital services	100.3	100.3	100.3	0.0%	0.0%	0.24	0.24	0.00
7	TRANSPORT	120.6	118.0	117.7	-0.3%	-2.4%	5.53	5.52	-0.01
7.1	Purchase of vehicles	118.6	107.1	107.1	0.0%	-9.7%	1.13	1.13	0.00
7.2	Operation of personal transport equipment	123.3	123.8	123.0	-0.6%	-0.2%	2.04	2.03	-0.01
7.3	Transport services	119.4	119.0	119.0	0.0%	-0.3%	2.36	2.36	0.00
8	COMMUNICATION	100.4	100.1	100.1	0.0%	-0.3%	4.68	4.68	0.00
8.1	Telecommunication equipment and services	100.4	100.1	100.1	0.0%	-0.3%	4.68	4.68	0.00
9	RECREATION and CULTURE	100.7	102.2	102.2	0.0%	1.5%	3.32	3.32	0.00
9.1	Audio-visual, photographic and information processing equipment	96.4	97.1	97.1	0.0%	0.7%	0.27	0.27	0.00
9.2	Recreational items and cultural services	100.5	100.5	100.5	0.0%	0.0%	1.97	1.97	0.00
9.3	Newspapers, books and stationery	102.2	106.6	106.6	0.0%	4.3%	1.09	1.09	0.00
10	EDUCATION	123.4	124.4	124.4	0.0%	0.8%	1.14	1.14	0.00
10	Education	123.4	124.4	124.4	0.0%	0.8%	1.14	1.14	0.00



EXPLANATORY NOTES

NOTE TO USERS

The Series 3 index incorporate the outcomes of a major review and reweighting of the Timor-Leste CPI. The new weights are based on the results of the 2014-15 Living Standard Survey. Two information papers were published about the review. The first— *‘Timor-Leste Consumer Price Index (CPI), Series 3 2018: Issues for Consideration’* was published in 2017 and sought the views of users on a range of issues under consideration in the review and reweighting exercise. The second *‘Technical Note of Timor-Leste Consumer Price Index Series 3 Reweight’* was published on October 2018 and set out the methodology and result of CPI Series 3. Both information papers can be found on the website of the National Institute of Statistics (NIS) at www.inetl-ip.gov.tl

BRIEF DESCRIPTION OF THE CPI

The Consumer Price Index (CPI) measures changes over time in the price of a ‘basket’ of goods and services which account for a high proportion of expenditure by resident private households. This ‘basket’ covers a wide range of goods and services, arranged in the following ten groups:

1. *Food and non-alcoholic beverages*; 2. *Alcohol and tobacco*; 3. *Clothing and footwear*; 4. *Housing*;
5. *Furnishings, household equipment and routine household maintenance*; 6. *Health*; 7. *Transport*,
8. *Communication*; 9. *Recreation and culture*; 10. *Education*.

Further information about the Timor-Leste CPI is contained in *A Guide to the Timor-Leste CPI* which can be downloaded from the NIS website at www.inetl-ip.gov.tl

INDEXES PUBLISHED

CPI figures are produced by the National Institute of Statistics (NIS) for each month and are released within one month of the end of the reference period.

The primary index published by NIS is the Timor-Leste Consumer Price Index. The data for this national index are presented in Key Figures and Table 1 of the publication.

NIS also publishes three secondary indexes for analytical purposes – the first, representing Dili price movements, the second, representing price movements in Baucau and the third represents price movements for other Timor-Leste municipalities (termed ‘Others’). These analytical series are compiled by taking subsets of the CPI basket, and are presented in Tables 2,3 and 4 in the publication.

COLLECTING PRICES FOR THE CPI

The collection of prices is largely carried out by trained field staff operating from Head office in Dili. The collection of prices in municipalities beyond Dili is carried out by NIS staff operating out of various offices of the NIS, while some prices are collected by special surveys.

WEIGHTING PATTERN

There are 35 expenditure classes (that is, categories of like items) in the Series 3 CPI and each expenditure class has its own weight, or measure of relative importance. In calculating the index, price changes for the various expenditure classes are combined using these weights. The Series 3 CPI weighting pattern is also available on the NIS website at www.inetl-ip.gov.tl



ANALYSIS OF CPI CHANGES

Movements in indexes from one period to another can be expressed either as changes in index points or as percentage changes. Percentage changes are calculated to illustrate two different kinds of movements in index numbers:

- movements between corresponding months of consecutive years
- movements between consecutive months

The following example illustrates the method of calculating changes in index points and percentage changes between any two periods:

All groups CPI: Dili index numbers:

January 2013	101.4
less January 2012	90.7
Change in index points	10.7
Percentage change	$10.7 / 90.7 \times 100 = 11.8\%$

Each table in this publication provides a detailed analysis of movements in the CPI since the previous period, including information on movements for groups and expenditure classes. It also shows the contribution which each makes to the total CPI. For instance, with the Timor-Leste 2013 the Rice expenditure class contributed 17.85 index points to the total all groups index number of 101.3 for January 2013. The final column shows contributions to the change in All Groups index points by each group and expenditure class.

ROUNDING

The published index numbers have been rounded to one decimal place, and the percentage changes (also rounded to one decimal place) are calculated from the rounded index numbers. In some cases, this can result in the percentage change for the total level of a group of indexes being outside the range of the percentage changes for the component level indexes.

REVISIONS

CPI original indexes are revised only in exceptional circumstances, such as to correct a significant error. As is the case with all price indexes, the index reference period (i.e. the period in which the index is set equal to 100.0) will be changed periodically.

DATA AVAILABLE

As well as the statistics included in this publication, there are more detailed data (in time series format) for each index available for downloading from the NIS website.



INSTITUTO NACIONAL DE ESTATÍSTICA
TIMOR-LESTE, I.P.

Instituto Nacional de Estatística, I.P.
Rua de Caicoli, Po Box 10
Dili, Timor-Leste
www.inetl-ip.gov.tl